



# THE SPECK

The Construction Specifications Institute

**CSI KNOXVILLE CHAPTER MEETING  
TUESDAY, SEPTEMBER 13TH, 2016**

**12 SOCIAL MEDIA POSTS  
EVERY PROFESSIONAL NEEDS  
TO BE SUCCESSFUL**

**1 HR  
AIA  
HSW**

**Presented By: Whitney Nicely-East** Real Estate Auctioneer, Nicely Done Auctions, LLC  
865-309-5700 | [info@whitneynicely.com](mailto:info@whitneynicely.com) | [WhitneyNicely.com](http://WhitneyNicely.com)



## CALHOUN'S ON THE TENNESSEE RIVER

400 Neyland Drive  
Knoxville, TN 37902  
(865) 673-3355

Our Chapter meetings are generally on the 2<sup>nd</sup> Tuesday of each month and are at Calhoun's on the River in one of the upstairs meeting rooms.



Lunch  
Seminar

11:30 am  
12:00 pm

\$0 CSI Members  
\$0 First-Time Guest  
\$20 Returning Guest/  
Non-Members

Please RSVP to [csiknox@gmail.com](mailto:csiknox@gmail.com) by Monday, September 12th, 2016

ORGANIZED SEPTEMBER 1958 - CHARTERED MAY 1959

**THE KNOXVILLE CHAPTER MEETS ON THE SECOND TUESDAY OF EVERY MONTH. GUESTS ARE WELCOME!**



**CSI KNOXVILLE IS A  
MEMBER OF THE CSI  
GULF STATES REGION**

## THE SPECK Editor

Stacy Flick Colbaugh - Editor  
[scolbaugh@lewisgroup.net](mailto:scolbaugh@lewisgroup.net)

THE SPECK is published monthly by the Knoxville Chapter of the Construction Specifications Institute. Readers are encouraged to submit articles and images of the construction industry interest for our membership. All submittals should be sent via e-mail, in the following formats: PDF, RTF, TIFF, JPEG, DWG, BMP, EPS, & DOC. Deadlines are the 25th of each month.



## KNOXVILLE CHAPTER: SEPTEMBER 2016

**2 EMERGING PROFESSIONAL**

**52 PROFESSIONAL**

**6 STUDENT**

**2 EMERITUS**

**2 RETIRED**

**64 TOTAL**




## CALENDAR OF EVENTS

### SEPTEMBER 2016

- 06 **CSI Board Meeting** - Tuesday, September 6th, 5:30 pm at Odle & Young's Office
- 7-9 **CONSTRUCT 2016** - Wednesday, September 7th through Friday, September 9th, Austin, Texas
- 13 **CSI Chapter Meeting** Tuesday, September 13th, 11:30 am at Calhoun's on the River. "Social Media posts every professional needs to be successful" Presented by Whitney Nicely (1 CEU)
- 16 **Construction Law Seminar** Friday, September 16th at Fox Den Country Club, 12284 N. Fox Den Drive, Knoxville, TN 37934 "Construction Law – The Project From Start To Finish" - Presented by Lewis, Thomason, King, Krieg & Waldrop, P.C. Check-In: 8:00 a.m. – 8:30 a.m. Seminar: 8:30 a.m. – 12:00 p.m. Lunch: 12:00 p.m. – 1:00 p.m. See Registration Form on page 12
- 20 **CSI Lunch & Learn** Tuesday, September 20th, 11:45 am at ETCDC. "Adhered Masonry Systems- Thin Brick/Thin Rock" Jim Riccio & Josh Brock, General Shale Brick (1 CEU)

### OCTOBER 2016

- 04 **CSI Board Meeting** - Tuesday, October 4th, 5:30 pm at Odle & Young's Office
- 06 **UTK Construction Science Career Fair** Thursday, October 6th
- 07 



**Architectural Scavenger Hunt**  
**October 7th**  
**6:00 - 8:00 pm**  
**Square Room on Market Square**
- 11 **CSI Chapter Meeting** Tuesday, October 11th, 11:30 am at Calhoun's on the River. "Employment And/or Social Media Issues" Chris McCarty, Lewis Thomasson
- 17 **CSI Lunch & Learn** Monday, October 17th, 11:45 am at ETCDC. "Grease Interceptors" Yancey Quiett, Ben O'Neal Co. (1 CEU)
- 24 **The CSI Golf Tournament** Monday, October 24th, 11:30 am at Willow Creek Country Club.

### NOVEMBER 2016

- 01 **CSI Board Meeting** - Tuesday, November 1st, 5:30 pm at Odle & Young's Office
- 08 **CSI Chapter Meeting** Tuesday, November 8th, 11:30 am at Calhoun's on the River. "City of Knoxville Sustainability initiatives" Presented by Erin Gill (No CEU)

## THE PRESIDENT'S MESSAGE

### It's FOOTBALL TIME IN TENNESSEE!

Ms SUZAN JORDAN, CSI  
Dupont Tyvek  
CSI Knoxville Chapter President  
[iamswj@yahoo.com](mailto:iamswj@yahoo.com)



As I write this, Tennessee Volunteers are preparing to do some really different things that they have never done before. Their opening game is on a Thursday and the next game is being played in Bristol Motor Speedway! It will be interesting to see how these "play" out this year!

Like UT, CSI Knoxville is preparing to bring to Knoxville something we have never done before! We are having an Architectural Scavenger Hunt! Ok...Ok... If you have been around CSI Knoxville for a while you may say, "We've held a scavenger hunt every year with UT." Yes, we have! However, this year we are having an Architectural Scavenger Hunt for the Professional Community! We have been working on this for a few months and are excited about the possibilities! The Architectural Scavenger Hunt will be held on October 7th from 6:00 - 8:00 pm and will begin and end at the Square Room on Market Square.

The teams will search for Architectural, Mechanical and ADA details. Plus, there will be some bonus brain twisting riddles written by our own "Riddler," Will Dunklin. As each team solves the clues, they will send pictures back to "headquarters". The winning team will be announced when we gather back at the Square Room at 8:00 pm.

Every registrant will leave with a T-Shirt and goody bag gathered by Gary Bergeron. So, start gathering your team together! I look forward to sharing this evening with you! For more information about this new event, see the story in this issue of *The Speck*.

**Example of one of our riddles:**  
**Standing on Market Street I'm sitting on top of the world. Who am I?**

Also coming up is our Thirteenth Annual Golf Tournament! It will be held October 24th, 2016 at Willow Creek. Wes Crowe and Josh Brock have planned a great way to start off your week and support students in UT Design & Construction related fields. Sponsorships are available! Sign your team up now! Jeremy Shipp has put together a great fall line-up for our chapter meetings and Lunch and Learns. Be sure to check these out in *The Speck* or at [www.csiknoxville.org](http://www.csiknoxville.org)  
I hope to see you at one or all of these fun fall events!

## CSI Knoxville Planning Meeting Notes - June 25, 2016

The Chapter leadership met at Dealer's Warehouse and spent a few hours planning the upcoming year for the Knoxville Chapter. We spent time in a self analysis of things we did well last year and identified areas that could use some improvement and redirection. The chapter is in excellent financial shape and we want to take advantage of some upcoming opportunities to make it even better.

- We have 2 opportunities at UT to get involved with Construction Management programs - one in the College of Engineering (Civil) and one in the College of Agriculture (Construction Science) and we plan to consider scholarships to support one or both of these efforts with funds from the Golf Tournament.
- There is interest in developing a student affiliate that is more representative of the CSI multi-disciplined membership. A task team will be charged with locating neutral ground for meetings, developing activities and networking both UT and Pellissippi students.
- We are currently scheduled to host the Gulf States Region Conference in June of 2018. Plans are underway with a theme designed around the forensic side of CSI (yes we have our own TV show). Prospective date, the first weekend of June.
- The Scavenger hunt is being redesigned to have a more adult focus and open it up to the general public that is interested in Design and Construction. Potential date is Oct. 7 from 6 - 9 downtown.
- We will update the Operating Guide this year.
- There is interest in revitalizing the CDT class.
- We will have a concerted effort in expanding the membership through contact non renewed members, recruit members in each firm, and by establishing greeters at the meetings.
- The CSI Flash Mob will be scheduled on a regular schedule to allow members to socialize together more since we no longer meet in the evenings.



## CSI LOCAL NEWS

# HELP WANTED

KATHERINE PROCTOR, RA, FCSI,  
CDT, AIA  
CSI KNOXVILLE CHAPTER  
PLANNING CHAIR & HISTORIAN



### HOUSE COMMITTEE CHAIR

The job responsibilities include:

- Be the contact each month between the Chapter and Calhouns on the River
- Provide an approximate count of attendees to Calhouns
- Select menu for special meals (Awards dinner)
- Bring badges and sign in sheets to the meetings
- Update badges (Word program) for new members or members changing jobs
- Collect any lunch fees from returning non-members (\$20 each)

### MEMBERSHIP COMMITTEE (Greeters)

The job responsibilities include:

- Assist the Membership Chairman (Geoffrey Cavalier) during meetings by greeting people at the door
- Introduce guests to members
- Provide President with names of guests to be recognized as the business meeting opens

### WEBSITE CHAIR

The job responsibilities include:

- Gathering articles to post on the website
- Uploading photos to the website
- Keeping the calendar updated

### REGION CONFERENCE COMMITTEE (June 2018 - downtown Knoxville)

Co chairs - Aaron Miller and Susan Davis

We need a number of people who are interested in working on this. Here are some areas that we will need help:

- Registration (web development initially, create badges for registrants & man check in table on site)
- Hotel coordination (set up room block, negotiate discounts, develop contract with hotel for needed space & food)
- Graphics development (Logo for event, shirt designs, signage, promotional materials)
- Continuing Education Coordination (select speakers, topics, register for CEUs, speaker bios, introductions)

- Awards Banquet coordination (ensure that Region Awards Chair has everything they need onsite)
- Spouse & Family Program (design and execute programs for attending spouses & children)
- Sponsorship recruitment (design and execute a sponsor program to offset costs)
- Goodie Bag development (collect information and items for goodie bags for registrants)
- Hospitality Suite - (coordinate beverages, snacks and bartenders)
- Audio/ Visual coordination - (ensure that each Education program has appropriate audio/ visual equipment)
- Fun coordination - (design fun activities for attendees including: Thursday & Friday night activities on the town, door prizes)

Table top show - (coordinate vendor table top show)

## CSI BOARD HIGHLIGHTS

By Susan Davis, CSI

Edited by THE SPECK Editor, Stacy Colbaugh, CSI, CDT

### August 2, 2016

The Board met on August 2nd. Here are some things that were discussed:

- Everyone thanked Suzan Jordan for hosting the July 4th event- it was a blast!
- The new board members and officers have been installed and are settling into their duties.
- The Knoxville chapter will be well represented at the CONSTRUCT conference in Austin this year. At the convention we will be accepting awards for Stacy Colbaugh who was awarded CSI's Communications Award for the Knoxville Chapter newsletter "The Speck and Outstanding Chapter Award."
- We have some great programs lined up for both chapter meetings and lunch and learns.
- We are also getting excited about our upcoming Golf Tournament on October 24th. We are trying to make online registration available this year.
- Preparations are also being made for the Product Show- the venue has been booked and everyone should save the date. The Product Show will be March 7th this year.
- We would like to be sure to make a big welcome for the students returning to UT this semester for both the Architecture and the Construction Science programs.
- We are getting closer to the Scavenger Hunt on October 7th. This event is open to everyone and registration will begin soon.

Next board meeting will be  
**September 6, 2016.**



## PRESENTATION SUMMARY

### BIOGRAPHY

**Whitney Nicely-East** Real Estate Auctioneer, Nicely Done Auctions, LLC  
865-309-5700 | info@whitneynicely.com | WhitneyNicely.com



Whitney Nicely is a native to Knoxville, TN. She graduated from the University of Tennessee in 2007 with a Bachelor of Arts in Communication.

Whitney defines herself as a self-motivated individual with a passion for exceeding goals and delivering exceptional results. She has a proven track record for establishing value based relationships built on trust, honesty, and strong ethical principles.

Whitney found a connection with real estate auctions in her teenage years by attending Saturday sales with her parents. They didn't "win" the first house auction she visited, but Whitney was hooked. In May 2015, Whitney became the Principal Auctioneer for Nicely Done Auctions, LLC.

Whitney has auctioned properties from 1 acre to 215+ acres of rolling hills.

Whitney is also the Principal Broker with Whitney Buys Houses, LLC. Whitney Buys Houses is more than a company name. It's a fact! Whitney purchased over 15 houses in 2015 by paying CASH, Lease with Option, taken over debt or she has received Owner Financing.

Whitney's favorite house is a Vacant house. She has several strategies to acquire unwanted properties. If you need cash within 60 days, call Whitney. She buys houses! 865-309-4500.



## PRESENTATION SUMMARY

### 12 SOCIAL MEDIA POSTS EVERY PROFESSIONAL NEEDS TO BE SUCCESSFUL

Presented by Whitney Nicely-East Real Estate Auctioneer, Nicely Done Auctions, LLC  
865-309-5700 | info@whitneynicely.com | WhitneyNicely.com

#### Description:

You've seen other posts that go "viral." You post constantly but your mom is the only "Like." You love Facebook. Your friends love to hate Facebook. Your Boss thinks you waste too much time on Facebook. You read it first thing in the morning. You practically can't go to sleep without thumb scrolling for a solid 30 minutes. Everyone KNOWS you can't go to the gym without a mirror selfie and "checking in" on Facebook!

So, why aren't you collecting leads from Facebook?

How do other people find clients or customers via Facebook?

Do you really need a business page?

What is this "content" people say your posts need to be successful? Should you hire someone to manage your social media account? Well, guess who has these answers and more that you haven't imagined yet? ME!!!

I run very successful Facebook pages. I don't pay for boosted posts on my houses. Regular, organic traffic leads me to different opportunities and my strategies will work for you too.

I believe that every professional person needs to enforce these simple and fun 12 posts on Facebook to be successful.



WhitneyNicely.com

## CSI INSTITUTE NEWS

By William Sundquist, CSI

Edited by THE SPECK Editor, Stacy Colbaugh, CSI, CDT

Congratulations to the Gulf States Region Members who will be receiving Institute Awards in Austin.

### 2016 Construction Specifications Institute Award Recipients

CSI will present several awards at CONSTRUCT 2016 & The CSI Annual Convention in Austin, TX. The CSI Honors & Awards Ceremony will take place Thursday, September 8 at 6 PM. Preregistration for this free event can be done at [www.constructshow.com](http://www.constructshow.com).

#### Communication Award:

This award is presented to a CSI member, chapter, region or group for outstanding effort in the communication of CSI related topics and activities. The award has three categories: continuing publications, electronic publications, and special publications.

Robert J. Bailey, CSI, CCS

Chicago Chapter Newsletter "Change Order"

Chicago Chapter Website

Chicago Chapter CSI2eye Event Booklet

**CSI Knoxville Chapter Newsletter "The Speck"**

**CSI Memphis Chapter Newsletter "The Memphis PerSPECTive"**

**CSI Memphis Chapter Website**

**2016 CSI Memphis BUILD/IT Products Display Show Publications**

Pikes Peak Chapter newsletter "The Intent"

Pikes Peak Chapter Website

Portland Chapter YouTube Channel

**William Sundquist, CSI**

**Steve C. Tubré, CSI, CCCA**

#### Organizational Certificate of Appreciation: Sanders 2000, Inc.

This award is presented to a firm, organization, or association who, in the opinion of their peers, has provided exceptional accomplishments that bring CSI to the forefront of the construction industry, promotes one of the tenants of CSI (Education, Certification, or Development of Technology) to benefit the construction industry, or worked with a local chapter, region or Institute to assist with their operations that provide a value added service. This is the highest award the Institute can bestow on a firm, organization, or association.

**Outstanding Contribution Award:** Poppy Bushnell, CSI, CDT and Cherise Schacter Lakeside, CSI, CDT  
This award is presented to a CSI member, chapter, region or group that has made commendable contributions to the goals of the Institute. It recognizes contributions above and beyond those normally performed as part of a chapter, region, or Institute officer, committee or member.

**Technical Document Award:** Catherine M. Houska, CSI  
This award is presented to an individual, chapter, region or group for a single outstanding accomplishment in technical writing other than project specifications.

**Andrew J. Drozda Mentorship Award:** Scott A. Didra, CSI

This award is presented to a CSI member, chapter, region or group that has worked with an institution of higher education offering a construction-related curricula and has made significant contributions to enhance the image and recognition of CSI within the educational institution(s), or has significantly contributed to preparing students in construction-related curricula to make a difference in the construction community.

**Distinguished Service Award:** Duane Michael Johnson, FCSI, CDT

This award is presented to a CSI member who has rendered distinguished service in the advancement of the Institute's mission or in its administration. Distinguished service is defined as notable and significant contributions at the chapter, region or Institute level that have furthered the mission of CSI, its standing in the industry or its image to the public. This award is one of the highest forms of recognition the Institute can bestow upon an individual.

CSI to Elevate Nine Members to Fellowship at Annual Convention. Two are from the **CSI Gulf States Region**

Fellows are nominated by their colleagues and selected by CSI's Jury of Fellows in recognition of their accomplishments in advancing construction technology, improving construction specifications, educating people in the construction industry or advancing the goals of the Institute.

**CSI members from the Gulf States Region joining this distinguished group in 2016 are:**

**Kent Kile, CSI, CCPR of CSI Nashville Chapter**  
**Robert Swan, CSI, CCS, CCCA of CSI New Orleans Chapter**



Lewis Thomason King Krieg & Waldrop Construction Law Group Presents Its 2016 Annual Seminar

# CONSTRUCTION LAW: The Project From Start To Finish SEPTEMBER 16, 2016



AIA  
East Tennessee



## TIME:

8:30 a.m. to 1:00 p.m.

REGISTRATION FORM  
ATTACHED TO EMAIL

## LOCATION:

### FOX DEN COUNTRY CLUB

12284 North Fox Den Drive | Knoxville, Tennessee

## CHECK IN:

8:00 a.m. to 8:30 a.m.

## REGISTRATION FEE INCLUDING SEMINAR AND LUNCH:

\$25.00 and \$20.00 for Each Additional Company Attendee

## REGISTRATION DEADLINE:

September 09, 2016

## FEATURING MODERATOR:

R. LOY WALDROP, JR., ESQ. | LEWIS THOMASON

## LUNCH GUEST SPEAKER:

BRENT HUBBS | VOLQUEST.COM

## CONTACT FOR QUESTIONS:

MARTI MERRELL | LEWIS THOMASON

Phone: (865) 546-4646

## SPEAKERS AND TOPICS:



ROBYN J. ASKEW

PROJECT: *Development*



DAVID A. DRAPER

PROJECT: *Contracts*



CHRIS W. McCARTY

PROJECT: *Employment*



W. PAUL WHITT

PROJECT: *Performance*



PRESTON A. HAWKINS

PROJECT: *Payment*

Tennessee Code Annotated  
SUBCONTRACTOR  
Default  
Work  
Comp  
Claim  
PERMIT  
BONDING  
FIELD REPORTS  
CHANGE ORDER REQUEST  
ARCHITECT  
DEVELOPER  
CERTIFICATE OF OCCUPANCY  
Daily Reports  
Defective Work  
SUBMITTAL  
AIA  
BIM  
ENGINEER  
INSURANCE  
Licensing  
Safety  
Change Orders  
Notice of Non-Payment Rebar  
Scupper  
Specifications  
Geotechnical  
Notice of Non-Payment Rebar

© 2016 LEWIS, THOMASON, KING, KRIEG & WALDROP, P. C.  
P.O. BOX 2425 | KNOXVILLE, TN 37901 | 865.546.4646  
WWW.LEWISTHOMASON.COM | KNOXVILLE | MEMPHIS | NASHVILLE



LEWIS THOMASON

Lewis, Thomason, King, Krieg & Waldrop, P.C.  
P.O. Box 2425  
Knoxville, TN 37901  
Phone: (865) 546-4646 | Fax: (865) 523-6529  
www.lewisthomason.com



## CONSTRUCTION LAW – The Project From Start To Finish

FOX DEN COUNTRY CLUB  
12284 N. Fox Den Drive  
Knoxville, TN 37934

**Friday, September 16, 2016**

Check-In: 8:00 a.m. – 8:30 a.m.  
Seminar: 8:30 a.m. – 12:00 p.m.  
Lunch: 12:00 p.m. – 1:00 p.m.

Attendee (Full Name): \_\_\_\_\_ (First Name For Badge): \_\_\_\_\_

Company Name: \_\_\_\_\_

Preferred Mailing Address: \_\_\_\_\_

City: \_\_\_\_\_ State/Province: \_\_\_\_\_ Zip/Postal Code: \_\_\_\_\_

Telephone: (\_\_\_\_) \_\_\_\_\_ Fax: (\_\_\_\_) \_\_\_\_\_ Email: \_\_\_\_\_

**Registration Fee:** \$25 Includes Seminar and Lunch; \$20 for Each Additional Company Attendee

**Please Check Appropriate Registration Fee:**

**Registration has been  
extended to  
Monday, Sept. 12<sup>th</sup>**

Attendee ☐ \$25

**Print Full Name of Additional Company Attendees:**

\_\_\_\_\_ ☐ \$20 Additional Company Attendee

\_\_\_\_\_ ☐ \$20 Additional Company Attendee

\_\_\_\_\_ ☐ \$20 Additional Company Attendee

\_\_\_\_\_ ☐ \$20 Additional Company Attendee

\_\_\_\_\_ ☐ \$20 Additional Company Attendee

**Total** \$ \_\_\_\_\_

### To Pay By Credit Card:

E-mail or Fax Registration Form and Credit Card Information To:

**Lewis Thomason**

**Attention: Cody Banks**

**Phone: (865) 546-4646 | Fax: (865) 523-6529**

**E-mail: [cbanks@lewisthomason.com](mailto:cbanks@lewisthomason.com)**

☐ Visa ☐ MasterCard ☐ American Express

Name as it appears on card \_\_\_\_\_

Card Number \_\_\_\_\_

Expiration Date \_\_\_\_\_

Security/CV code from back of card \_\_\_\_\_

Signature \_\_\_\_\_

### To Pay By Check or Money Order:

(in U.S. funds payable to Lewis Thomason)

**Mail Completed Registration Form With Payment To:**

**Lewis Thomason**

**Attention: Cody Banks**

**P.O. Box 2425**

**Knoxville, TN 37901**

☐ Check ☐ Money Order

# What's outside stays outside.

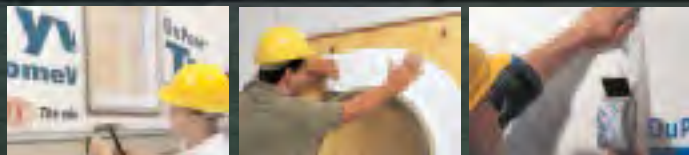
## That's the comfort of choosing Tyvek.<sup>®</sup>



DuPont™ Tyvek® HomeWrap®, CommercialWrap®, StuccoWrap®, Tape, Wrap Caps, and DuPont™ Flashing Systems, create a virtually seamless protective envelope against the elements. Together, they offer your homebuyers superior protection whenever the weather turns threatening. Tyvek® helps seal in comfort while helping keep water and wind where they belong—safely outside.

Be sure to specify Tyvek®. It's the comfortable choice for weather protection. Find out more at **1-800-44-TYVEK** or **www.TYVEK.com**.

**Darson Buckner, CSI, CDT  
LEED Green Associate  
Dealers Warehouse Corporation  
DuPont Tyvek Senior Certified  
Weatherization Specialist  
865-556-3140  
darsonbuckner@hotmail.com**



DuPont™  
**Tyvek®**

**The forecast calls for Tyvek.®**



*The miracles of science™*

Copyright© 1995-2004 DuPont or its affiliates. All rights reserved. The DuPont Oval logo, DuPont™ The miracles of science™ and all products denoted with ™ and ® are trademarks or registered trademarks of DuPont or its affiliates.

## CSI CORNER

### How did we get here? The transition to maintenance activities

By Sheldon Wolfe, RA, FCSI, CCS, CCCA  
Greater Minneapolis-St. Paul Area

So far in this series, we first looked at the good old days, when CSI membership rose continually, sometimes at an amazing rate. During the growth period, we saw that membership in CSI offered tangible benefits. CSI was an organization that helped those involved in construction to understand how construction documents are related, how to prepare them, and how to interpret them. Much of that information was developed by CSI members, so there were countless opportunities for members to take an active part in the future of specifications. Face meetings were important because the only other options for communication were written letters, which made real-time discussion impossible, and telephone calls, which were quite expensive.

We then looked at the effect of the economy on membership. Frequently the bogeyman for many things that ailed CSI, I think it is obvious that only rarely was there a correlation between the economy and CSI membership. In some cases, membership grew dramatically during and after recessions. More significantly, upturns in the economy did not result in a return of lost members.

I did not mention a couple of other suggested reasons for membership decline. Some blamed it on member classification, arguing that people didn't want to join an organization that supposedly discriminated against its own members by referring to some as professional, the implication being that other members were less than professional. The membership application form was another target; supposedly, it was too difficult to figure out. Both of these issues were addressed with no discernible effect on membership.

As noted in previous articles, CSI had a lot to offer for many years. The problem now is that we have little to offer that is seen as critically necessary or unique. Organization of construction information, at least in written form, typically follows MasterFormat and SectionFormat, and there has been an increase in the use of UniFormat. Commercial guide specifications are available from BSD, ARCOM, Kalin Associates, SpexPlus, and others, so there is at least a perception that specifications are "taken care of" and they no longer require much attention. Although specifiers often complain about them, manufacturers' specifications are much improved and generally require only simple modifications to be useful.

Because of CSI's success in those areas, and because it has not moved on from them, we don't have much to offer in the way of creative activities. We have gone from an active organization, with many ways to contribute to construction documents and processes, to an organization focused on maintaining what already has been done. That does not mean that maintenance is not important or challenging work, but it's not as enticing as working on new programs.

It's not that there is nothing more to do, or that new programs haven't been proposed. Even ignoring the missed golden opportunity to continue doing what CSI had done best by organizing building modeling information, members have made many interesting suggestions. Here are some of the more recent programs, all of which were initiated just before or since our peak membership.

- 1997. Contribution to the Uniform Drafting System, maintenance status.
- 1998. PerSpective. Sold to BSD.
- 2004. UDS Certification Feasibility Task Team, terminated.
- 2008. GreenFormat. Updated 2014, little activity since.
- 2009. Practice Guides (updates of PRM/MOP), published.
- 2011-2012. Body of Knowledge Assessment. Used by task teams to determine essential information.
- 2013. Building Technology Education Program Feasibility Task Team, terminated.
- Of course, task teams comprise but a small percentage of the total membership, but active task teams indicate to members that something useful is going on.

What else can CSI do? Michael Chusid offers some interesting thoughts.

- Create a replacement for the moribund spec-data format for technical information that addresses current concerns and both electronic and digital delivery.
- Create standards for incorporating meaningful product information into BIM.
- Continued training of newcomers to design, construction, and building management industries in contract documents.
- Tools to help coordinate and improve the accessibility of the incomprehensibly broad range of data necessary for construction.
- Assess how robotics, 3d printing, holograms, smart buildings, etc., will affect the roles and responsibilities of the players in the construction team.

Do you have a suggestion for a new program?

© 2016, Sheldon Wolfe, RA, FCSI, CCS, CCCA, CSC

Agree? Disagree? Leave your comments at <http://swconstructivethoughts.blogspot.com/>



## CSI LOCAL INSPIRATION

### The Definite Dozen by Pat Summitt

#### Respect Yourself and Others

- There is no such thing as self-respect without respect for others.
- Individual success is a myth. No one succeeds all by themselves.
- People who do not respect those around them will not make good team members and probably lack self-esteem themselves.
- When you ask yourself, “Do I deserve to succeed?,” make sure the answer is yes.

#### Take Full Responsibility

- There are no shortcuts to success.
- You can’t assume larger responsibility without taking responsibility for the small things, too.
- Being responsible sometimes means making tough, unpopular decisions.
- Admit to and make yourself accountable for mistakes. How can you improve if you’re never wrong?

#### Develop and Demonstrate Loyalty

- Loyalty is not unilateral. You have to give it to receive it.
- The family business model is a successful one because it fosters loyalty and trust.
- Surround yourself with people who are better than you are. Seek out quality people, acknowledge their talents, and let them do their jobs. You win with people.

#### Learn to Be a Great Communicator

- Communication eliminates mistakes.
- Listening is crucial to good communication.
- We communicate all the time, even when we don’t realize it. Be aware of body language.
- Make good eye contact.
- Silence is a form of communication, too. Sometimes less is more.

#### Discipline Yourself So No One Else Has To

- Self-discipline helps you believe in yourself.
- Group discipline produces a unified effort toward a common goal.
- When disciplining others, be fair, be firm, be consistent.
- Discipline helps you finish a job, and finishing is what separates excellent work from average work.

#### Make Hard Work Your Passion

- Do the things that aren’t fun first, and do them well.
- Plan your work, and work your plan.
- See yourself as self-employed.

#### Don’t Just Work Hard, Work Smart

- Success is about having the right person, in the right place, at the right time.
- Know your strengths, weaknesses, and needs.
- When you understand yourself and those around you, you are better able to minimize weaknesses and maximize strengths. Personality profiles help.

#### Put the Team Before Yourself

- Teamwork doesn’t come naturally. It must be taught.
- Teamwork allows common people to obtain uncommon results.
- Not everyone is born to lead. Role players are critical to group success.
- In group success there is individual success.

#### Make Winning an Attitude

- Combine practice with belief.
- Attitude is a choice. Maintain a positive outlook.
- No one ever got anywhere by being negative.
- Confidence is what happens when you’ve done the hard work that entitles you to succeed.

#### Be a Competitor

- Competition isn’t social. It separates achievers from the average.
- You can’t always be the most talented person in the room, but you can be the most competitive.
- Influence your opponent: By being competitive you can affect how your adversary performs.
- There is nothing wrong with having competitive instincts. They are survival instincts.

#### Change Is a Must

- It’s what you learn after you know it all that counts the most.
- Change equals self-improvement. Push yourself to places you haven’t been before.
- Take risks. You can’t steal second base with your foot on first.

#### Handle Success Like You Handle Failure

- You can’t always control what happens, but you can control how you handle it.
- Sometimes you learn more from losing than winning. Losing forces you to reexamine.
- It’s harder to stay on top than it is to make the climb. Continue to seek new goals.

## CSI NATIONAL NEWS

### Sinclair Community College, Columbus State Community College and CSI Receive Grant from the National Science Foundation to Standardize Curriculum in Undergraduate Education

[www.csinet.org](http://www.csinet.org)

ALEXANDRIA, Va. (June 23, 2016) – A partnership including Sinclair Community College, Columbus State Community College and The Construction Specifications Institute (CSI) has been awarded a grant from the National Science Foundation, Division of Undergraduate Education.

The grant is focused on developing a standardized educational curriculum and educator's tool kit for architecture and construction management programs at two-year educational institutions. It will also be designed to provide uniformity and a nationally recognized certification system for technicians attending these institutions. The curriculum and tool kit will be based on knowledge tested by CSI's Construction Document Technologist (CDT) certificate. Students who simultaneously earn an associate degree and the CDT certification will be better able to demonstrate their ability to solve technical problems and their knowledge of design, building materials, document/project management, and effective team communication. "This project will be transformative for the built environment," said CSI's Executive Director and CEO, Mark N. Dorsey, FASAE, CAE. "The CDT credential is already both recognized and required by many employers. It is a natural fit for this endeavor. We are thrilled to be a part of this process in moving the industry forward and helping to better prepare the industry thought leaders of tomorrow."

Also included within the scope of the grant are activities to increase the enrollment of populations traditionally underrepresented in architectural and construction management careers. Through intensive professional development, community colleges will increase their numbers of underrepresented students and begin building a culture of inclusion in STEM (science, technology, and math) programs.

"The construction trades will continue to be a vital part of our local and regional economy and the students that can excel in these fields will be the ones that fill these critical jobs," Sinclair President Steve Johnson said. "I'm excited for the opportunity to once again partner with the National Science Foundation to move this program forward."

"Construction managers have many responsibilities on a project, from need through design, construction and operational management," said Dean Bortz, M.A., CSI, CDT, Assistant Professor, Construction Management at Columbus State Community College. "Central Ohio is built and managed by Columbus State students and graduates through the Construction Management program, which has been continuously accredited by the American Council for Construction Education (ACCE) since 2000. The program continues to provide entry level construction managers for all types of construction projects across the region and country. This collaboration brings design-build industry educational leaders together with CSI through the National Science Foundation to promote excellence and credentialing for the next generation of construction professionals."

Additional collaborators on the grant project are; The NSF Building Efficiency for a Sustainable Tomorrow Center and the Coalition of Community College Architecture Programs serving as national dissemination partners. The Institute for Women in Trades, Technology & Science will provide training on Women in STEM recruitment, persistence, and success strategies.

#### About CSI

CSI is a national association dedicated to improving the documentation, management, and communication of building information as used by the construction community. CSI accomplishes its mission through the development of construction standards and formats such as MasterFormat and UniFormat; the promulgation of those formats through master guide specifications and building information management (BIM) software; training and certification programs, including the Construction Documents Technology (CDT) and Certified Construction Contract Administrator (CCCA) exams; publication of Construction Specifier magazine; and an ever-expanding membership of decision-makers who identify and specify building product solutions. CSI members include a cross-section of specifiers, architects, contractors, suppliers, and other construction project professionals who are touched by construction documentation. For more information, visit [www.csinet.org](http://www.csinet.org), or call (800) 689-2900.

#### About Sinclair College

As one of the lowest tuition rates in Ohio, Sinclair is consistently ranked among the top community colleges in America and committed to providing quality education. Sinclair's student to faculty ratio of nineteen to one is among the lowest at any Ohio college. Students who complete degrees at Sinclair see a 114% median increase in their yearly earnings the first year after graduation; from a median annual pay of \$17,500 before graduation to \$37,400 the year after graduation (Source: ODJFS and

(SINCLAIR... Continued ON Page 14)

## HINDSIGHT

### Photos from August CSI Chapter Meeting

Photos By Stacy Flick Colbaugh, CSI, CDT



(SINCLAIR.. Continued from Page 13)

NSC data). Sinclair remains the Southwest Ohio Region's primary choice for college education having awarded more degrees and certificates than any other Ohio Community College over the last 5 years (Source: Ohio Board of Regents). For more information, visit [www.sinclair.edu](http://www.sinclair.edu) or call (800) 315-3000.

#### About Columbus State Community College

The path to a debt-free degree begins at Columbus State Community College, with the lowest tuition, most degree options, and best 2+2 and 3+1 pathway agreements in the region. With a high regional demand for focused skills in the Construction Sciences and Skilled Trades, Columbus State offers students the opportunity to enter high-paying middle skills job in just two years, or transfer to a four-year institution with an average of 40 percent savings on a bachelor's degree. Columbus State also grants more professional certifications than any other Ohio college. For more information about Columbus State Community College, or to learn more about programs in the Construction Sciences, visit [www.csc.edu](http://www.csc.edu).

A large black magnifying glass graphic. Inside the lens, the text "KNOXVILLE SCAVENGER HUNT" is written in bold, with "BROUGHT TO YOU BY CSI KNOXVILLE" and the CSI Knoxville Chapter logo below it.

**KNOXVILLE  
SCAVENGER  
HUNT** BROUGHT TO YOU  
BY CSI KNOXVILLE  
**CSI**  
Knoxville Chapter

Architectural Scavenger Hunt  
October 7th  
6:00 - 8:00 pm  
Square Room on Market Square





AIA Registered Provider  
Program Summary



# CSI LUNCH & LEARN: ADHERED MASONRY SYSTEMS THIN BRICK/THIN ROCK

PRESENTED BY JIM RICCIO, THIN VENEER PRODUCT MANAGER  
& JOSH BROCK FROM GENERAL SHALE BRICK

**TUESDAY, SEPTEMBER 20TH, 2016**

LUNCH & NETWORKING: 11:45 A.M. – 12:00 P.M.

PRESENTATION: 12:00 P.M. – 1:00 P.M.



**1 HR  
CEU**

CSI Knoxville Chapter continues to offer you another learning opportunity "Adhered Masonry Systems Thin Brick/Thin Rock" Presented by Jim Riccio, Jim Riccio, Thin Veneer Product Manager & Josh Brock from General Shale Brick.

**Description:** The program will give an overview of thin brick and thin stone products and why they are becoming a popular masonry solution for many design professionals.

#### Learning Objectives:

- Describe manufacturing process for thin veneers
- Understand thin veneer characteristics
- Learn about thin veneer building code requirements
- Learn various installation methods for interior and exterior applications
- Address ASHRAE 90.1 solutions for thin veneers
- Discover Design Solutions using thin veneers

#### How Taught:

The presenter will use a Powerpoint presentation and handouts to give an overview of thin veneer products and how they are used as a design solution. Time will be available at the end for questions and comments.

#### Target Audience:

This program is geared toward architects, specifiers, interior designers, and other design professionals.

**WHERE:** East Tennessee Community Design Center WATE 6 Carriage House  
1300 N. Broadway, Knoxville, TN 37917

**PARKING:** You should be able to find a parking space in the WATE parking lot. There also may be parking spaces available along Luttrell St.

#### AIA CEU: 1 HR Learning Unit

**RSVP:** Seating is limited, if you wish to participate, please send to Jeremy Shipp at [shipp.arc@gmail.com](mailto:shipp.arc@gmail.com) with your name, email, and phone by 3:00 pm on Monday, September 19th.

Josh Brock  
Architectural Sales Representative, Allied AIA, CSI, AGC  
General Shale Brick, Inc. | [www.generalshale.com](http://www.generalshale.com)  
9714 Parkside Dr  
Knoxville, TN 37922  
P 865.531.6203 | C 865-388-1833 | F 865.531.6339  
[Joshua.brock@generalshale.com](mailto:Joshua.brock@generalshale.com)

Jim Riccio  
Thin Veneer Product Manager  
General Shale  
Corporate Headquarters 3015 Bristol Highway  
Johnson City, TN 37601  
Phone: 615-598-8059  
Email: [jim.riccio@generalshale.com](mailto:jim.riccio@generalshale.com)





# CSI Knoxville

**Construction Information... Simplified.**

## THIRTEENTH ANNUAL CSI GOLF TOURNAMENT at Willow Creek Golf Club



The Knoxville Chapter of the Construction Specification Institute is committed to promoting education in construction related fields. Proceeds from this event benefit the University of Tennessee, College of Architecture and Design, the CSI Scholarship and other local construction and design educational programs.

Date: October 24, 2016

Time: 12:45 am Tee Time

Lunch: Served at 11:30 am

Place: Willow Creek Golf Club

Cost: \$110.00 Individuals  
\$440.00 4 Man Teams

Game: 4 person Scramble

Scoring: The golf pro will flight all scores into two divisions.

Contests: Longest Drive  
Closest to the Hole  
1<sup>st</sup> Place 1, 2 Flights  
2<sup>nd</sup> Place 1, 2 Flights

Event Coordinators:  
Wes Crow, CSI  
[wcrow@meritconstruction.com](mailto:wcrow@meritconstruction.com)  
Phone: (865) 389-3146

Josh Brock, CSI  
[Joshua.brock@generalshale.com](mailto:Joshua.brock@generalshale.com)  
Phone: (865) 531-6203



### GOLF ENTRY FORM:

Team/Company Name: \_\_\_\_\_  
Address: \_\_\_\_\_ City, State, Zip \_\_\_\_\_  
Phone Number: ( ) \_\_\_\_\_ E-mail: \_\_\_\_\_  
Team Captains: \_\_\_\_\_ Teams \_\_\_\_\_ x \$440 = \_\_\_\_\_  
Players: \_\_\_\_\_ Players \_\_\_\_\_ x \$115 = \_\_\_\_\_  
\_\_\_\_\_  
\_\_\_\_\_  
\_\_\_\_\_ Total = \_\_\_\_\_

**\*Please make check or money order payable to CSI:** Mail payment & entry form back to:  
CSI Golf Tournament c/o Wes Crow  
Merit Construction, Inc.  
10435 Dutchtown Road  
Knoxville, TN 37932  
**Entry Deadline: October 18, 2016**

### EVENT SPONSOR FORM:

CART SPONSOR: \$400.00 SIGN AT THE REGISTRATION TABLE AND SIGN ON DRINK CART  
TEE / HOLE SPONSOR: \$150.00 SIGN AT TEE BOX  
LONG DRIVE SPONSOR: \$200.00 SIGN AT THE TEE BOX  
CLOSEST TO THE HOLE SPONSOR: \$200 SIGN AT THE TEE BOX

Company Name: \_\_\_\_\_  
Address: \_\_\_\_\_ City, State, Zip \_\_\_\_\_  
Phone Number: \_\_\_\_\_ E-mail: \_\_\_\_\_  
Cart ☐ Tee / Hole ☐ Long Drive ☐ Closest to Hole ☐

**\*Please make check or money order payable to CSI:** Mail payment & entry form back to:  
CSI Golf Tournament c/o Wes Crow  
Merit Construction, Inc.  
10435 Dutchtown Road  
Knoxville, TN 37932  
**Entry Deadline: October 18, 2016**

Note: Willow Creek requires all golfers to wear soft spikes on the course. Dress is casual. Shorts are acceptable, jeans are not allowed. Collared shirts are recommended. You do not have to field an entire team to play. Individuals may sign up and they will be teamed with others for a good mix of talent.

**President Mr James Bagley, CSI, CCS, AIA**

Goodwyn, Mills & Cawood, Inc.  
2660 Eastchase Ln Ste 200  
Montgomery, AL 36117-7024  
[james.bagley@gmcnetwork.com](mailto:james.bagley@gmcnetwork.com)  
334-271-3200

**Vice President Thomas Ferguson, CSI, CCCA**

InterBay Building Services, Inc.  
7552 Navarre Pkwy Unit 44-A  
Navarre, FL 32566-7309  
[tom@interbay.co](mailto:tom@interbay.co)  
850-936-8186

**Secretary Suzan Jordan, CSI, CDT**

1000 Fox Rd  
Knoxville, TN 37922-4125  
[suzanwjordan@icloud.com](mailto:suzanwjordan@icloud.com)  
865-389-9476

**Treasurer Amy Fleming, CSI, CDT**

Triad Corporation  
1007 E Main St  
Chattanooga, TN 37408-1526  
[afleming@triad-elec.com](mailto:afleming@triad-elec.com)  
423-267-2288

**Membership Chair William Sundquist, CSI**

Whitacre Greer  
7813 Laurelton Dr  
Chattanooga, TN 37421-1954  
[wsundquist@wgpaver.com](mailto:wsundquist@wgpaver.com)

**Certification Chair Mr. Christopher Young, CCS**

Blitch Knevel Architects, LLC  
757 Saint Charles Ave  
New Orleans, LA 70130-3780  
[cjy@blitchknevel.com](mailto:cjy@blitchknevel.com)  
504-524-4634

**Technical Chair Mr Gary Bergeron, CSI**

Kelso-Regen Associates, Inc.  
201 Sherlake Ln Ste 101  
Knoxville, TN 37922-2376  
[gary@kelso-regen.com](mailto:gary@kelso-regen.com)  
865-588-5348

**Product Show Chair Mr. Floyd Sterling, CSI, CDT**

Shreve Land Construction Company  
624 Travis St Ste 100  
Shreveport, LA 71101-3020  
[fsterling@shreveland.com](mailto:fsterling@shreveland.com)  
318-226-0056

**Planning Chair Mr. Bruce Martin, CSI, CDT, RRC**

Dillard Construction Company  
2631 Rhea County Hwy  
Dayton, TN 37321-5816  
[bmartin@dillardconstruction.com](mailto:bmartin@dillardconstruction.com)  
423-775-1793



Building Knowledge  
Improving Project Delivery



**Academic Liaison Kent Kile, CSI, CCPR**

PPG Paints  
1113 Sydney Ter  
Mount Juliet, TN 37122-7566  
[kkile@ppg.com](mailto:kkile@ppg.com)  
615-347-4572

**Academic Liaison M. Keith West, CSI, CCPR**

West Architectural Specialties  
291 Highway 51 Ste E6  
Ridgeland, MS 39157-3937  
[keith@westarchspec.net](mailto:keith@westarchspec.net)  
601-853-9908

**Electronic Comm. Andrew Murray Jr., CSI, CDT**

Canizaro Cawthon Davis  
129 S President St  
Jackson, MS 39201-3605  
[jmurray@ccdarchitects.com](mailto:jmurray@ccdarchitects.com)  
601-948-7337

**Immediate Past President William Sundquist, CSI**

Whitacre Greer  
7813 Laurelton Dr  
Chattanooga, TN 37421-1954  
[wsundquist@wgpaver.com](mailto:wsundquist@wgpaver.com)

**Chair Thomas Ferguson, CSI, CCCA**

InterBay Building Services, Inc.  
7552 Navarre Pkwy Unit 44-A  
Navarre, FL 32566-7309  
[tom@interbay.co](mailto:tom@interbay.co)  
850-936-8186

**Chair Cindi Brooks, CSI, CDT**

Mid South Prestress, LLC  
2949 Joe Dowlen Road  
Pleasant View, TN 37146  
[cindibrooksgsr@gmail.com](mailto:cindibrooksgsr@gmail.com)  
615-746-6606

**Chair Robert Swan, CSI, CCS, CCCA, AIA, SCIP**

Construction Document  
Consultants, LLC  
4849 Laurel St  
New Orleans, LA 70115-1649  
[robeswan@gmail.com](mailto:robeswan@gmail.com)  
504-717-8244

**Director Mr Jimmy Lail, CSI**

Raines Brothers, Inc.  
1040 E Main St  
Chattanooga, TN 37408-1540  
[jimmy@rainesbrothersinc.com](mailto:jimmy@rainesbrothersinc.com)  
423-468-2029

**Finance Chair Randall Lewis, CSI, AIA**

J H & H Architects, PA  
1047 N Flowood Dr  
Flowood, MS 39232-9533  
[rlewis@jhharchitects.com](mailto:rlewis@jhharchitects.com)  
601-948-4601



## KNOXVILLE CHAPTER CSI LEADERS – 2016-2017

### OFFICERS

President	Suzan Jordan	<a href="mailto:iamswj@yahoo.com">iamswj@yahoo.com</a>	865-389-9476
President - Elect	Jim Odle	<a href="mailto:j.odle.oyarch@comcast.net">j.odle.oyarch@comcast.net</a>	865-803-4237
Vice-President	Aaron Miller	<a href="mailto:amiller@dia-arch.com">amiller@dia-arch.com</a>	865-243-8453
Secretary	Susan Davis	<a href="mailto:babydavis111603@aol.com">babydavis111603@aol.com</a>	865-271-7998
Treasurer	Whitney Kaul	<a href="mailto:whitneykaul@gmail.com">whitneykaul@gmail.com</a>	314-719-6112
Past President	Gary Bergeron	<a href="mailto:gary@kelso-regen.com">gary@kelso-regen.com</a>	865-748-6304

### DIRECTORS

2014-2017	Will Dunklin	<a href="mailto:will@williamdunklin.com">will@williamdunklin.com</a>	865-525-6322
	Kathy Proctor	<a href="mailto:ksp53@me.com">ksp53@me.com</a>	865-599-7783
	Jim Vineyard	<a href="mailto:jbvineyard@tva.gov">jbvineyard@tva.gov</a>	423-240-2481
2016-2019	Leslie Fawaz	<a href="mailto:leslie@communitydc.org">leslie@communitydc.org</a>	865-748-7705
	Samer Shatara	<a href="mailto:sshatara@denark.com">sshatara@denark.com</a>	865-388-3661
	Geoffrey Cavalier	<a href="mailto:gcavalie@vols.utk.edu">gcavalie@vols.utk.edu</a>	615-964-1260

### COMMITTEES

<b>Members Services</b>			
Membership House	Geoffrey Cavalier	<a href="mailto:gcavalie@vols.utk.edu">gcavalie@vols.utk.edu</a>	615-964-1260
	Suzan Jordan	<a href="mailto:iamswj@yahoo.com">iamswj@yahoo.com</a>	865-389-9476
<b>Education</b>			
Education / Programs	Jeremy Shipp	<a href="mailto:shipp.arc@gmail.com">shipp.arc@gmail.com</a>	423-506-0058
	Jim Vineyard	<a href="mailto:jbvineyard@tva.gov">jbvineyard@tva.gov</a>	423-240-2481
<b>Student Chapter</b>			
President	Shubhekshya (Subu) Bhandari	<a href="mailto:sbhandar1@vols.utk.edu">sbhandar1@vols.utk.edu</a>	865-312-4728
Vice-President	Elizabeth Ott	<a href="mailto:eott@vols.utk.edu">eott@vols.utk.edu</a>	931-801-0308
Secretary	Briyana Rainer	<a href="mailto:brainer@vols.utk.edu">brainer@vols.utk.edu</a>	901-834-6131
<b>Recognition</b>			
Technical Certification Awards	Will Dunklin	<a href="mailto:will@williamdunklin.com">will@williamdunklin.com</a>	865-525-6322
	Nancy Roberts	<a href="mailto:nrober10@utk.edu">nrober10@utk.edu</a>	865-599-1632
	Daniel Smith	<a href="mailto:Daniel.smith@odomconstruction.com">Daniel.smith@odomconstruction.com</a>	865-389-6691
<b>Communication</b>			
Website	Kathy Proctor	<a href="mailto:ksp53@me.com">ksp53@me.com</a>	865-599-7783
Publication	Stacy Flick Colbaugh	<a href="mailto:scolbaugh@lewisgroup.net">scolbaugh@lewisgroup.net</a>	865-584-5000
Faculty Advisor	James Rose	<a href="mailto:jrose18@utk.edu">jrose18@utk.edu</a>	865-719-0743
Academic Affairs	Gary Bergeron	<a href="mailto:gary@kelso-regen.com">gary@kelso-regen.com</a>	865-748-6304
<b>Fundraising</b>			
Product Show	Josh Brock	<a href="mailto:Joshua.brock@generalshale.com">Joshua.brock@generalshale.com</a>	865-388-1833
	John Hockensmith	<a href="mailto:jhockensmith@mhm.com">jhockensmith@mhm.com</a>	865-544-2000
Golf Tournament	Wes Crow	<a href="mailto:wcrow@meritconstruction.com">wcrow@meritconstruction.com</a>	865-966-4100
	Josh Brock	<a href="mailto:Joshua.brock@generalshale.com">Joshua.brock@generalshale.com</a>	865-388-1833
<b>Chapter Administration</b>			
Planning / Historian	Kathy Proctor	<a href="mailto:ksp53@me.com">ksp53@me.com</a>	865-599-7783
Bylaws & Op Guide	Susan Davis	<a href="mailto:babydavis111603@aol.com">babydavis111603@aol.com</a>	865-271-7998