

06 - 2016



THE SPECK

The Construction Specifications Institute



Cordially Invites You and a Guest to our

*Annual Awards Dinner
and Officer Installation Ceremony*

*Join as we celebrate
Another Successful Year*

*Tuesday, June 14, 2016
at 6:00 pm
at Calhoun's on the River*

**400 Neyland Drive
Knoxville, TN 37902
(865) 673-3355**

Our Chapter meetings are generally on the 2nd Tuesday of each month and are at Calhoun's on the River in one of the upstairs meeting rooms.



**Dinner begins at 6:00 pm
For CSI Members and their
Guests**

**RESERVATIONS ARE
REQUIRED**

Please RSVP to Suzan Jordan suzanwjordan@yahoo.com or call (865) 389-9476 by Monday, June 13th, 2016

ORGANIZED SEPTEMBER 1958 - CHARTERED MAY 1959

THE KNOXVILLE CHAPTER MEETS ON THE SECOND TUESDAY OF EVERY MONTH. GUESTS ARE WELCOME!



CSI KNOXVILLE IS A MEMBER OF THE CSI GULF STATES REGION

THE SPECK Editor

Stacy Flick Colbaugh - Editor
scolbaugh@lewisgroup.net

THE SPECK is published monthly by the Knoxville Chapter of the Construction Specifications Institute. Readers are encouraged to submit articles and images of the construction industry interest for our membership. All submittals should be sent via e-mail, in the following formats: PDF, RTF, TIFF, JPEG, DWG, BMP, EPS, & DOC. Deadlines are the 25th of each month.



KNOXVILLE CHAPTER: JUNE 2016

- 2 EMERGING PROFESSIONAL**
- 53 PROFESSIONAL**
- 8 STUDENT**
- 2 EMERITUS**
- 2 RETIRED**

- 67 TOTAL**



CALENDAR OF EVENTS

JUNE 2016

- 07** CSI Board Meeting - Tuesday, June 7th, **5:30 pm** at Odle & Young's Office
- 14** CSI Awards Banquet & Induction of New Officers Tuesday, June 14th, **6:00 pm** at Calhoun's on the River.
- 24** CSI Lunch and Learn - Friday, June 24th, **11:30 am** at East Tennessee Community Design Center WATE 6 Carriage House "**Sustainable Design/Green Roofing**" Presented By Mike Ford from Garland Corp. (1 AIA/CES Learning Unit and 1 GBCI CE Learning Unit)

JULY 2016

- 02** CSI Annual Chapter 4th of July Party - (No Chapter Meeting) - Saturday, July 2nd, **5:30 pm** at Suzan Jordan's House.
- 05** CSI Board Meeting - Tuesday, July 5th, **5:30 pm** at Odle & Young's Office
- 15** The Outstanding Chapter Commendation for FY16 is due on July 15, 2016. <http://www.csinet.org/involved/Honors-Awards>
- TBD** CSI Lunch and Learn - TBD **11:30 am** at East Tennessee Community Design Center WATE 6 Carriage House "**Safety Services**" Presented By Brian Dolin

AUGUST 2016

- 02** CSI Board Meeting - Tuesday, August 2nd, **5:30 pm** at Odle & Young's Office
- 09** CSI Chapter Meeting Tuesday, August 9th, **11:30 am** at Calhoun's on the River. **Paul Whitt to speak about specifications.**

SEPTEMBER 2016

- 06** CSI Board Meeting - Tuesday, September 6th, **5:30 pm** at Odle & Young's Office
- 7-9** CONSTRUCT 2016 - Wednesday, September 7th through Friday, September 9th, Austin, Texas
- 13** CSI Chapter Meeting Tuesday, September 13th, **11:30 am** at Calhoun's on the River.



**EDUCATION: SEPT. 7-9 | EXHIBIT HALL: SEPT. 8-9
AUSTIN CONVENTION CENTER | AUSTIN, TX**

THE PRESIDENT'S MESSAGE

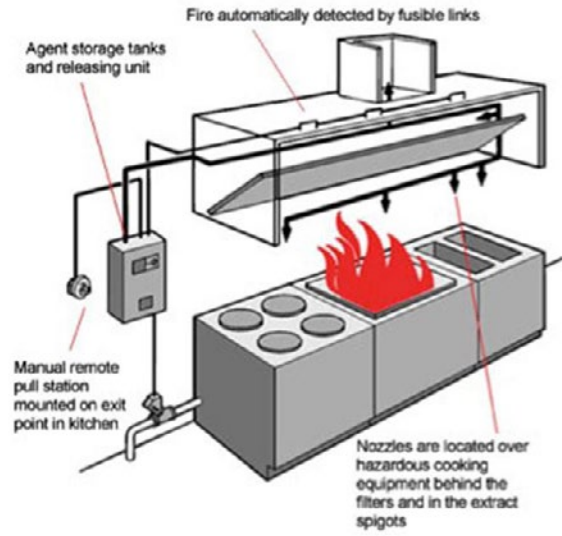
WHAT I LEARNED FROM CSI... RANGEHOOD

MR GARY T. BERGERON, CSI
Kelso-Regen Associates, Inc.
CSI Knoxville Chapter President
gary@kelso-regen.com



This is my last article in the CSI Knoxville newsletter as your president. I have been honored to serve our organization and wish the new officers the best in the coming year. My articles may continue to appear in our chapter newsletter and the GSR newsletter as the region technical chair on a less frequent basis. I apologize in advance if I “ruin” any further James Bond type movies and/or TV shows with my articles.

We all enjoy a juicy steak or ribs on special occasions, but how many of us think about that juice during the cooking process? The “smoke” we see rising from our favorite restaurant is actually



Fire suppression system

the oils and fat being exhausted by an NFPA 96 commercial range hood system during the cooking process. There are many different configurations of commercial hoods, but we will discuss a wall mounted hood in this article. A commercial range hood exhaust system is similar to the hood over your residential stove with some notable exceptions.



Exhaust fans

(RANGEHOOD... Continued on Page 4)

(RANGEHOOD.... Continued from Page 3)



Commercial range hood system

A commercial range hood has an exhaust fan, grease filters, hood enclosure, ductwork, and lights, but they are heavier duty than the unit in your residence. The commercial exhaust fan is usually mounted with the discharge 40" above the roof in a vertical upblast

arrangement to disperse the cooking fumes. The fan is also equipped with hinges which allow it to be rotated off of the roof curb so that the exhaust duct under the fan can be pressure washed and cleaned of grease on a regular interval. The grease filters in the hood are a "baffle" type that creates multiple turns in the air as it exits the hood. These airflow turns cause the grease to be deposited on the filter baffles which are cleaned in the dishwasher at the end the day. If stainless steel grease filters are specified, they will not become discolored by the dishwasher like aluminum filters often do. The hood enclosure is at least 6" wider and deeper than the cooking surfaces to provide "capture" of the cooking fumes and smoke. The hood is normally stainless steel or galvanized steel which is welded "liquid tight" to prevent the grease deposition on adjacent surfaces. The exhaust duct is 16 gauge welded steel ductwork with liquid tight joints. If the duct is routed horizontally, it must slope back towards the hood at ¼" drop per foot so that the grease runs back towards the hood. The exhaust duct also includes liquid tight cleanout doors every 10'-0" and at changes in direction to allow pressure washing of the grease deposits on the interior of the duct. The hood lights are usually "marine grade" sealed fixtures which prevent the entrance of grease into the electrical contact portion of the fixture. All of these components are much



Range hood welded exhaust duct

(RANGEHOOD... Continued on Page 5)

(RANGEHOOD.... Continued from Page 4)



Commercial hood enclosure, filters, lights, and fire suppression nozzles

heavier than a residential system and the system usually requires additional structural support.

The biggest difference between a residential and commercial hood is the addition of an “automatic” liquid fire suppression system. The system includes a tank of liquid fire suppression chemical which is piped to the suppression nozzles over each piece of equipment and nozzles in the hood exhaust duct. The automatic portion of the system is activated by a fusible link which melts at a specified fire temperature. The fusible link is spring loaded via steel cables which punctures a gas cartridge to propel the liquid which turns to a foam when the liquid hits a hot surface. The fusible link is located in the exhaust collar of the hood above the grease filters. If the hood and duct is not cleaned on a regular basis, the fusible link can become coated with dust and grease and not melt as specified. There is also a manual pull station located next to the kitchen exit which should be pulled by the kitchen staff if the automatic system does not activate. The fire suppression system includes a shunt trip breaker to turn off electrical connections to the cooking equipment. If gas is the cooking source, then the fire suppression system activates a motor operated valve to turn off the gas in the event of a fire.

Most commercial range hood systems are equipped with a make up air system to replace the air that is being exhausted by the hood. The make up air is introduced into the kitchen adjacent to the hood and is approximately 20% less than the air being exhausted. The 20% make up air is normally introduced into the restaurant by the HVAC units serving the dining area. This allows the kitchen to be “negative” air pressure in relation to the dining area which keeps the cooking odors in the kitchen. The dining room HVAC system is often 30% make up air which pressurizes the entire restaurant space by 10% to keep the HVAC system at an optimum operating point.



Range hood lights



Exhaust fan





Cordially Invites You and a Guest to our

Annual Awards Dinner
and Officer Installation Ceremony

Join as we celebrate
Another Successful Year

Tuesday, June 14, 2016
at 6:00 pm

at Calhoun's on the River

400 Neyland Drive
Knoxville, TN 37902
(865) 673-3355

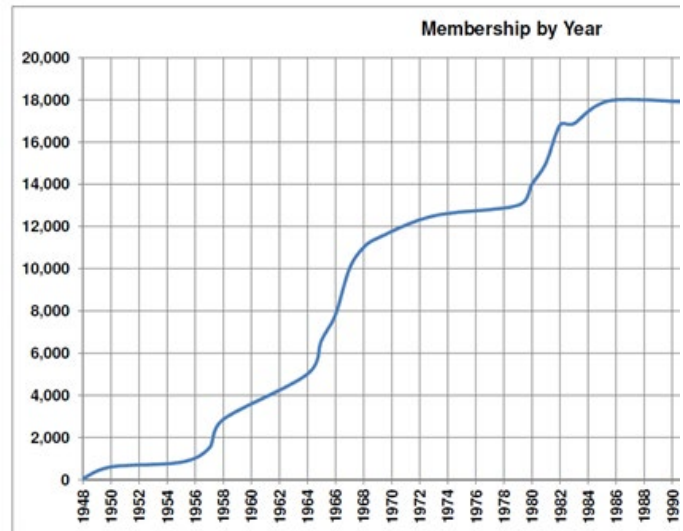
RESERVATIONS ARE REQUIRED

Please RSVP to Suzan Jordan suzanwjordan@yahoo.com
or call (865) 389-9476 by Monday, June 13th, 2016

CSI CORNER

HOW DID WE GET HERE? THE GOOD OLD DAYS?

By Sheldon Wolfe, RA, FCSI, CCS, CCA
Greater Minneapolis-St. Paul Area



A couple of years ago I wrote two articles about how the number of CSI members and CSI chapters: "[How did we get here? Membership](#)," which showed how total membership changed over the years, and "[How did we get here? Chapters](#)," which looked at the change in the number of chapters during the same time.

One of the things that has plagued CSI for some time is a lack of a tangible something of value. For a very long time, CSI offered useful things of real value. The first part of our membership curve suggests CSI must have had *something* that brought in new members and led to the creation of new chapters. Let's see if we can discover what that something was.

While reading several historical documents, I found nothing that said "We did this and gained 200 members!" but I found a few things that contributed to CSI's growth. Yes, there were a few membership drives, but it's important to understand that a membership drive with nothing to offer probably will be unsuccessful. If you have nothing to offer, what difference does it make if you can get it at half price?

To understand what made CSI grow, we must look at what it was about construction documents that encouraged the formation of CSI. We could search for documents from that time and analyze them, or we could use the original goals of the organization as an indicator of what was wrong with construction documents. Consider this list of the five priorities, and what they suggest - if these things were not problems, there would have been no reason to include fixing them as goals!

Better specification writing. Unless specifications were poorly written, there would have been no need for improvement. I have read specifications written in the late nineteenth and early twentieth centuries and I will tell you they could have been better. Lacking the guidelines of *MasterFormat* and *SectionFormat*, they appear to have been written in a stream-of-consciousness style, wandering from one subject to another. They were inconsistent in style, format,

sequence, and organization, even when issued from the same office.

Simpler specifications. The specifications I read were short, which made them usable despite other deficiencies. I can only speculate that by "simpler," CSI founders were thinking of consistent formatting and style.

Standardization of building codes. Unfortunately, CSI has had no influence on building codes, which, if anything, continue to become more complex and often contradictory.

Standardized specifications for public works at all levels. CSI has had some effect on public sector specifications, at least for the organization of information. Today, most national and many state agencies require compliance with *MasterFormat* and *SectionFormat*. More important, because of the common use of commercial guide specifications and manufacturers' specifications, there is a great amount of standardization throughout construction in the US. Study of new materials and processes developed during World War II, as substitutes or improvements. Although CSI formally presents discussion of new materials through *the Construction Specifier*, it was the informal networking of members that helped promote new materials and ideas.

Other objectives included: providing a forum for exchange of information among architects, engineers, contractors, building maintenance engineers, educators, and others involved in construction; improving quality, clarity, and technical validity of specifications; developing a greater appreciation of the value of specifications; getting architecture and engineering schools to develop courses for preparing specifications;

The architects who started CSI recognized the chaotic state of construction documents and banded together to bring order to them. How did they do that? What did they do that enticed others to join them?

In 1948, CSI had members but no chapters. Even though the bylaws allowed the formation of chapters, with a minimum of ten members, it took a few years before chapters appeared. In 1960, an article titled "Chapters Not Begun" was published in *the Construction Specifier*. It listed ten states that had ten or more members, then encouraged those members to start local chapters. The Metro New York Chapter, with thirty-nine members, was the first, followed by DC and Chicago chapters in 1952, and Los Angeles in 1953. I believe the founding of chapters was a big step in the initial growth of the organization. It's one thing to know that others share common interests, quite another to meet with them, share information, discuss problems, and work toward the elimination of those problems. Remember, at that time communication was limited to written letters and phone calls. The chapter meeting became an important member benefit and made it easy to show non-members why they should join. Membership drives during these early days were quite successful. In 1956, 300 new members joined in six months, and a membership in 1957 brought in nearly 1,000 members, along with seven new chapters. Clearly, CSI had something to offer, as can be seen on the membership curve.

As noted, what we would call "networking" today was an important part of membership, but what else did CSI offer? *The Construction Specifier*, first published the year after CSI was incorporated, had to play a big part, with technical articles leading the way. 1950 saw the introduction of "Specification Clinic", and it was common for the magazine to discuss how to write better specifications. Carl J. Ebert, the editor from 1949 through 1963, understood what members needed to know and successfully filled the magazine with needed information. The usefulness of *the Specifier* was made evident in 1956 when 800 copies were taken by architects at that year's annual AIA convention. The early '60s saw the addition of activities and programs that made CSI more attractive and continued to draw more members. Committee work began in earnest, giving more members opportunities to contribute to technical documents. The specifications competition was promoted in *the Specifier*, and region conferences brought members together from larger

areas. More technical documents were included in *the Specifier* as "pink sheets" and chapters began technical research.

Two major publications finally addressed many of the problems known to specifiers and manufacturers. A series of pink sheets titled "A Manual of Practice for Specification Writing Methods" led to the formation of a committee that would develop and publish the CSI Manual of Practice. During the same period, the 20-page "CSI Format for Building Specifications" was published in *the Specifier*, and the original 16 Divisions of *MasterFormat* were introduced. The Spec-Data program, started as a joint venture with the Producers' Council, presented a standard method of presenting information, a great boon to specifiers and manufacturers alike.

Together, all of these things brought great value to CSI members. There were things to do, problems to solve, and face meetings were the way to get things done. By 1969, with the introduction of *SectionFormat*, most of CSI's important contributions to the industry were completed, and the membership curve flattened for the next decade.

The next growth spurt occurred from 1980 through 1996. CSI continued to develop its documents, *MasterFormat* became the accepted standard for organization of all types of construction information, the five-digit numbering system was a great improvement over the limited four-digit system, *Uniform Location of Subject Matter* was published, and in 1978, the CCS certification program was introduced, followed by the CDT, the CCPR, and the CCCA.

Next month, we'll look at what has happened since then.

© 2016, Sheldon Wolfe, RA, FCSI, CCS, CCCA, CSC Agree? Disagree? Leave your comments at <http://swspecifcthoughts.blogspot.com/>



Making Mobile Friendly Presentations (going new with "old school")

You don't have to break the bank to make mobile friendly presentations.

If you use Windows then you probably have Powerpoint. If you have a Mac then you have Keynote, and if you don't have either you can download for free Open Office Impress. (<https://www.openoffice.org/product/index.html>)

This process works on all three. I will walk through it using Microsoft's Power Point.

First Set up your slide orientation and size

Go to View and select slide Master then select page setup.

Select 16x9 but use portrait.

Set titles to 54pt

Set subtitle text in text boxes to 32pt

Set text in text boxes to 26pt

Fonts should be clearly legible - I recommend Helvetica or Arial. They are big on the computer screen but do tests and look at them on a small screen phone to check.

Graphics & Photos - should be simple and clear - don't use high resolution. Remember your downloading the pdf on a mobile device - most people want quick. I use a 150 dpi resolution which is sufficient graphically and makes the file really small which translates into nearly instantaneous downloads.

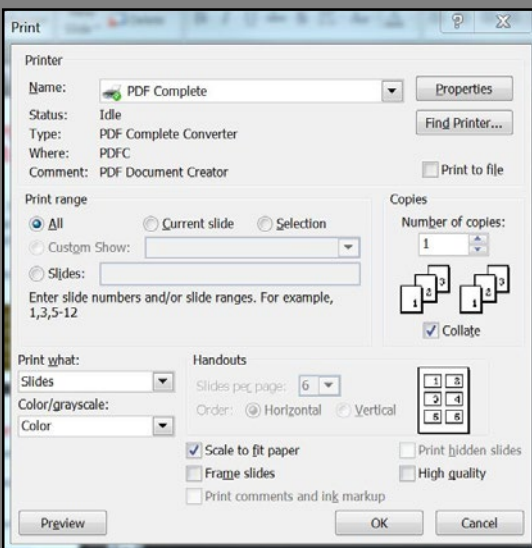
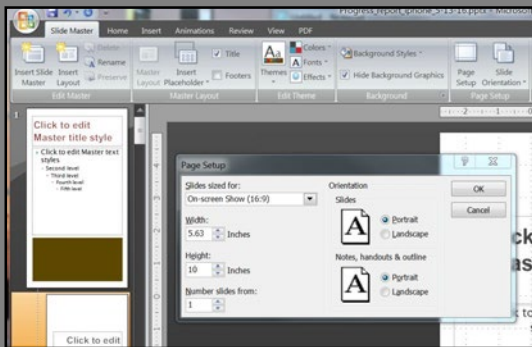
Print your file to a pdf—note check the box scale to fit. I have found that using a legal size format is close enough to the 16x9 ratio to give the appropriate format.

You are only limited by your imagination!

You can also use any word processing program to do this provided that you can manipulate images with it.

by,

John Murray, CSI, CDT
Designer / Specifier



CSI BOARD MEETING MINUTES

By Nancy Roberts, CSI, CDT

Edited by THE SPECK Editor, Stacy Colbaugh, CSI, CDT

May 3, 2016

In Attendance:

Gary Bergeron, President (and proxy for Leslie Fawaz)
Suzan Jordan, President-Elect
Susan Davis, Director (2014-2016)
Samer Shatara, Director (2014-2016)
Will Dunklin, Director (2015-2017)
Kathy Proctor, Director (2015-2017) (and proxy for Nancy Roberts)
Geoffrey Cavalier, Academic Affairs Chair

These meeting minutes were recorded by Susan Davis and are outlined as follows:

The meeting was held at Odle & Young's Office and was called to order at 5:30 p.m. by Gary Bergeron. Meeting generally followed a meeting agenda prepared by Gary.

1. Previous meeting minutes (attached)

The April 5, 2016 meeting minutes had been emailed to board members by Nancy Roberts. The minutes were reviewed and approved.

2. Treasurer's report (attached)

The treasurer's report had been emailed to board members by Leslie Fawaz.

3. President report

Gary reported that ACW was having a meeting on May 11th and asked a couple of board members to support ACW by attending this meeting. The Gulf States Region (GSR) conference in Pensacola was attended by Kathy Proctor, Suzan Jordan, Susan Davis, Samer Shatara, and Gary Bergeron. Both Kathy and Susan made presentations. Gary thanked everyone who attended April's meeting with a presentation by Will Dunklin.

4. President-Elect Report

No report.

5. Vice President report

No report.

6. Board members/committee group reports

6.1 Member Services (membership, fun, and house) – Daniel Smith, Director: Gary and Suzan have been discussing the annual awards banquet to be held at Calhoun's on June 14th; this will be an evening meeting.
6.2 Education (education, programs, and special programs) – Will Dunklin, Director: No lunch and learn programs were noted. Board members were asked to forward any suggestions for programs to Jeremy Shipp or Will Dunklin.

The chapter meeting programs are as follows:

May 10th chapter meeting will be Chip O'Rear speaking about custom building products (CEU anticipated).

June 14th chapter meeting will be the annual awards banquet to be held in the evening; significant others are invited to attend (no CEU).

July 12th (date tentative) chapter meeting was noted to be Brian Dolin speaking about safety services (no CEU).
August 9th chapter meeting will be Paul Whitt to speak about specifications (no CEU).

September 13th chapter meeting will be Erin Gill speaking about City of Knoxville Sustainability Initiatives (no CEU).
October 11th chapter meeting will be Chris McCarty speak about employment and/or social media issues (no CEU).
The (CEU) notation for each chapter meeting refers to the continuing education credits made available for attendees.

6.3 Recognition (technical, certification, and awards) – Susan Davis, Director: No report.

6.4 Communications (website, publication, and liaison) – Daniel Smith, Director: Reported that Stacy Colbaugh was recognized with an award for **The Speck** at the GSR conference in Pensacola.

6.5 Fundraising (product show and golf tournament) – Kathy Proctor, Director: Josh Brock is preparing a final report from this year's product show pending receipt of the last invoiced payment.

The 'new and improved' Scavenger Hunt was discussed. A committee was formed to plan the event with Will as chair and Gary as co-chair; Geoffrey Cavalier will assist. Suzan spoke to Gary Beimers, Secretary of the Institute, about scholarships. Kathy moved that excess funds from golf tournament and product show be used to fund scholarships for construction-related students at the University of Tennessee. The motion was seconded by Samer and passed unanimously.

6.6 Chapter Administration (planning, historian, bylaws, and operating guide) – Suzan Jordan, Director: Suzan distributed a copy of the proposed bylaw changes which were reviewed. Suzan moved that board approve the proposed bylaw changes as amended via email by Gary Beimers, Secretary of the Institute, and recommend acceptance by the chapter members. The motion was seconded and passed unanimously. See attached.

A planning meeting will be held for current and incoming board members at Dealer's Warehouse. The date is tentatively set for Saturday, June 25th at 9:00 a.m.

The student chapter will not meet again until classes resume in the fall. The student chapter won the neighborhood library design competition at the recent GSR conference.

7. Calendar

No changes to calendar.

8. Old business

No old business.

9. New business

The GSR conference in 2018 will be held in Knoxville. Several ideas were discussed, including using the theme "CSI:

Killer Specs". A planning committee will be formed. Next board meeting will be June 7, 2016.





Honors and Awards
The Outstanding Chapter Commendation for FY16 is due on July 15, 2016.

<http://www.csinet.org/involved/Honors-Awards>



HINDSIGHT



CONGRATULATIONS!

CSI Knoxville is proud to announce that the Knoxville Chapter newsletter "The Speck" was awarded with the Gulf State Region Continuing Publication Award. It was presented at the CSI Knoxville May Chapter Meeting by Gary Bergeron, CSI Knoxville President and the award was accepted by the newsletter editor Stacy Flick Colbaugh.

Also, the Knoxville Chapter newsletter "The Speck" has been selected to receive CSI's Communications Award at Construct 2016, this September in Austin, Texas.



What's outside stays outside.

That's the comfort of choosing Tyvek.[®]



DuPont™ Tyvek® HomeWrap®, CommercialWrap®, StuccoWrap®, Tape, Wrap Caps, and DuPont™ Flashing Systems, create a virtually seamless protective envelope against the elements. Together, they offer your homebuyers superior protection whenever the weather turns threatening. Tyvek® helps seal in comfort while helping keep water and wind where they belong—safely outside.

Be sure to specify Tyvek®. It's the comfortable choice for weather protection. Find out more at **1-800-44-TYVEK** or **www.TYVEK.com**.

**Darson Buckner, CSI, CDT
LEED Green Associate
Dealers Warehouse Corporation
DuPont Tyvek Senior Certified
Weatherization Specialist
865-556-3140
darsonbuckner@hotmail.com**



The forecast calls for Tyvek.[®]

DuPont™
Tyvek[®]



The miracles of science™

The American Institute of Architects Continuing Education System & Garland's LEED Accredited Presentations

AIA/CES & GBCI CE Registered Provider Program Summary

Provider: The Garland Company, Inc. **Length:** 1 hour
Program #: 099 GR **Credits:** 1 AIA/CES Learning Units
1 GBCI CE Learning Unit
Program: Sustainable Design/
Green Roofing **HSW/SD Credit:** Yes

Course Description: Understand the sustainable design of commercial roofing.

Learning Objectives: The participants will understand the concept of sustainable design as it relates to commercial roofing applications. Innovative technologies such as cool roofs, photovoltaic roofing, vegetated roof systems, recyclable roofing, roofing materials manufactured with post consumer recycled content, and low VOC roofing options will be discussed.

How Taught: A Powerpoint or slide presentation with group exercises and discussion. Planned Q&A throughout presentation.

A/V Requirements: Electrical outlets and a screen for the Powerpoint or slide presentation. In some cases a projector is also required. For group settings, one on one presentations can be viewed on laptop.

Who Should Attend: Architects, specifiers, design professionals and, building owners in the commercial/industrial building market.

Cost: There is no cost to bring this program into your firm or chapter.

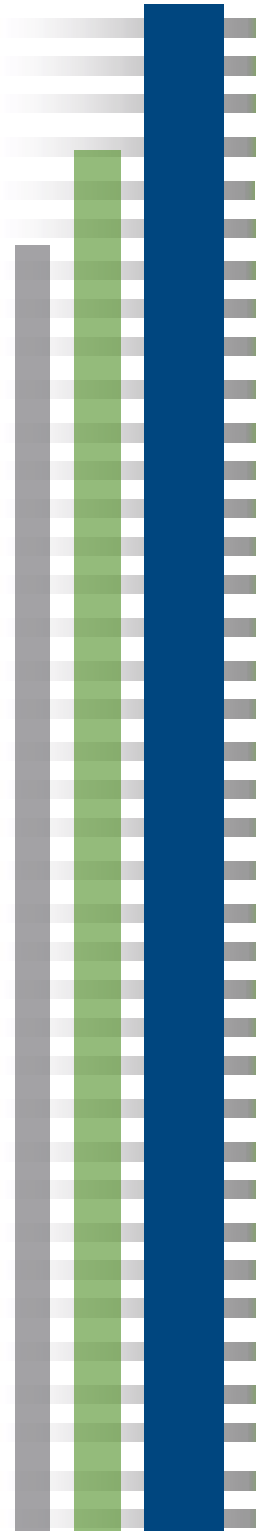
For more information: Contact you local Garland Representative.

CSI LUNCH AND LEARN

Friday, June 24th, 11:30 am

at East Tennessee Community Design Center WATE 6
Carriage House "**Sustainable Design/Green Roofing**"
Presented By Mike Ford from Garland Corp. (1 AIA/
CES Learning Unit and 1 GBCI CE Learning Unit)

The Garland Company, Inc. Architectural Presentation



President Mr James Bagley, CSI, CCS, AIA

Goodwyn, Mills & Cawood, Inc.
2660 Eastchase Ln Ste 200
Montgomery, AL 36117-7024
james.bagley@gmcnetwork.com
334-271-3200

Vice President Thomas Ferguson, CSI, CCCA

InterBay Building Services, Inc.
7552 Navarre Pkwy Unit 44-A
Navarre, FL 32566-7309
tom@interbay.co
850-936-8186

Secretary Suzan Jordan, CSI, CDT

1000 Fox Rd
Knoxville, TN 37922-4125
suzanwjordan@icloud.com
865-389-9476

Treasurer Amy Fleming, CSI, CDT

Triad Corporation
1007 E Main St
Chattanooga, TN 37408-1526
afleming@triad-elec.com
423-267-2288

Membership Chair William Sundquist, CSI

Whitacre Greer
7813 Laurelton Dr
Chattanooga, TN 37421-1954
wsundquist@wgpaver.com

Certification Chair Mr. Christopher Young, CCS

Blicht Knevel Architects, LLC
757 Saint Charles Ave
New Orleans, LA 70130-3780
cjy@blichtknevel.com
504-524-4634

Technical Chair Mr Gary Bergeron, CSI

Kelso-Regen Associates, Inc.
201 Sherlake Ln Ste 101
Knoxville, TN 37922-2376
gary@kelso-regen.com
865-588-5348

Product Show Chair Mr. Floyd Sterling, CSI, CDT

Shreve Land Construction Company
624 Travis St Ste 100
Shreveport, LA 71101-3020
fsterling@shreveland.com
318-226-0056

Planning Chair Mr. Bruce Martin, CSI, CDT, RCC

Dillard Construction Company
2631 Rhea County Hwy
Dayton, TN 37321-5816
bmartin@dillardconstruction.com
423-775-1793



Building Knowledge
Improving Project Delivery



Academic Liaison Kent Kile, CSI, CCPR

PPG Paints
1113 Sydney Ter
Mount Juliet, TN 37122-7566
kkile@ppg.com
615-347-4572

Academic Liaison M. Keith West, CSI, CCPR

West Architectural Specialties
291 Highway 51 Ste E6
Ridgeland, MS 39157-3937
keith@westarchspec.net
601-853-9908

Electronic Comm. Andrew Murray Jr., CSI, CDT

Canizaro Cawthon Davis
129 S President St
Jackson, MS 39201-3605
jmurray@ccdarchitects.com
601-948-7337

Immediate Past President William Sundquist, CSI

Whitacre Greer
7813 Laurelton Dr
Chattanooga, TN 37421-1954
wsundquist@wgpaver.com

Chair Thomas Ferguson, CSI, CCCA

InterBay Building Services, Inc.
7552 Navarre Pkwy Unit 44-A
Navarre, FL 32566-7309
tom@interbay.co
850-936-8186

Chair Cindi Brooks, CSI, CDT

Mid South Prestress, LLC
2949 Joe Dowlen Road
Pleasant View, TN 37146
cindibrooksgsr@gmail.com
615-746-6606

Chair Robert Swan, CSI, CCS, CCCA, AIA, SCIP

Construction Document
Consultants, LLC
4849 Laurel St
New Orleans, LA 70115-1649
rob Swan@gmail.com
504-717-8244

Director Mr Jimmy Lail, CSI

Raines Brothers, Inc.
1040 E Main St
Chattanooga, TN 37408-1540
jimmy@rainesbrothersinc.com
423-468-2029

Finance Chair Randall Lewis, CSI, AIA

J H & H Architects, PA
1047 N Flowood Dr
Flowood, MS 39232-9533
rlewis@jhharchitects.com
601-948-4601

**OFFICERS**

President	Gary Bergeron	gary@kelso-regen.com	865-748-6304
President - Elect	Suzan Jordan	iamswj@yahoo.com	865-389-9476
Vice-President	Jim Odle	j.odle.oyarch@comcast.net	865-803-4237
Secretary	Nancy Roberts	nrober10@utk.edu	865-599-1632
Treasurer	Leslie Fawaz	leslie@communitydc.org	865-748-7705
Past President	Samer Sharara	sshatara@denark.com	865-388-3661

DIRECTORS

2014-2016	Samer Shatara		
	Susan Davis	babydavis111603@aol.com	865-271-7998
	Daniel Smith	Daniel.smith@odomconstruction.com	865-389-6691
2014-2017	Will Dunklin	will@williamdunklin.com	865-525-6322
	Kathy Proctor	ksp53@me.com	865-599-7783
	Jim Vineyard	jvineyard@tva.gov	423-240-2481

COMMITTEES**Members Services**

Membership	Darson Buckner	darsonbuckner@hotmail.com	865-556-3140
Fun/ House	Suzan Jordan	iamswj@yahoo.com	865-389-9476

Education

Education / Programs	Jeremy Shipp	shipp.arc@gmail.com	423-506-0058
	Jim Vineyard	jvineyard@tva.gov	423-240-2481

Student Chapter

Pres.	Shubhekshya (Subu) Bhandari	sbhandar1@vols.utk.edu	865-312-4728
Vice Pres.	Elizabeth Ott	eott@vols.utk.edu	931-801-0308
Sec.			

Recognition

Technical	Will Dunklin	will@williamdunklin.com	865-525-6322
Certification	Paul Pierson	paulpierson@comcast.net	865-560-0272
Awards	Daniel Smith	Daniel.smith@odomconstruction.com	865-389-6691

Communication

Website	Suzan Jordan	iamswj@yahoo.com	865-389-9476
Publication	Stacy Flick Colbaugh	scolbaugh@lewisgroup.net	865-584-5000
Faculty Advisor	James Rose	jrose18@utk.edu	865-719-0743
Academic Affairs	Geoffrey Cavalier	gcavalie@vols.utk.edu	615-964-1260

Fundraising

Product Show	Josh Brock	Joshua.brock@generalshale.com	865-388-1833
	John Hockensmith	jhockensmith@mhm.com	865-544-2000
Golf Tournament	Wes Crow	wcrow@meritconstruction.com	865-966-4100
	Josh Brock	Joshua.brock@generalshale.com	865-388-1833

Chapter Administration

Planning / Historian	Kathy Proctor	ksp53@me.com	865-599-7783
Bylaws & Operating Guide	Nancy Roberts	nrober10@utk.edu	865-599-1632