



The Construction Specifications Institute

KNOXVILLE CHAPTER MEETING TUESDAY, SEPTEMBER 9TH, 2014

TVA ECONOMIC DEVELOPMENT

Presented By:

ANDREW LAWSON

TVA Regional Economic Development

arlawson@tva.gov



CALHOUN'S ON THE TENNESSEE RIVER

400 Neyland Drive
Knoxville, TN 37902
(865) 673-3355



Social	5:30 pm
Dinner	6:00 pm
Seminar	7:00 pm
\$0	CSI Members
\$0	First-Time Guest
\$20	Returning Guest/ Non-Members

Please RSVP to csiknox@gmail.com

ORGANIZED SEPTEMBER 1958 - CHARTERED MAY 1959

THE KNOXVILLE CHAPTER MEETS ON THE SECOND TUESDAY OF EVERY MONTH. GUESTS ARE WELCOME!



CSI KNOXVILLE IS A MEMBER OF THE CSI GULF STATES REGION

THE SPECK Editor

Stacy Flick Colbaugh - Editor
scolbaugh@lewisgroup.net

THE SPECK is published monthly by the Knoxville Chapter of the Construction Specifications Institute. Readers are encouraged to submit articles and images of the construction industry interest for our membership. All submittals should be sent via e-mail, in the following formats: PDF, RTF, TIFF, JPEG, DWG, BMP, EPS, & DOC. Deadlines are the 25th of each month.

CALENDAR OF EVENTS

SEPTEMBER 2014

- 02** **CSI Board Meeting** - Tuesday, September 2nd, 2014 at 11:30 am at Odle & Young's Office.
- 04** **BIM User Group Meeting** - Thursday, September 4th, 2014 at 6:00 pm - 7:30 pm at ETDCDC: East Tennessee Community Design Center 1300 N. Broadway Knoxville, TN 37917 Office (865) 525-9945 Mobile (865) 748-7705
- 09** **CSI Chapter Meeting** - Tuesday, September 9th, 2014 at 5:30 pm at Calhoun's on the River.
TVA ECONOMIC DEVELOPMENT: By Andrew (Andy) Lawson, Regional Consultant with TVA Economic Development.



OCTOBER 2014

- 01** **Construction Science Fair** - Wednesday, October 1, 2014 from 10 am - 3 pm at the Brehm Arena on the UT Agricultural Campus.
- 03** **East Tennessee Accessibility Symposium** - Friday, October 3, 2014 at the Knoxville Civic Coliseum.
- 07** **CSI Board Meeting** - Tuesday, October 7th, 2014 at 11:30 am at Odle & Young's Office
- 14** **CSI Chapter Meeting** - Tuesday, October 14th, 2014 at 5:30 pm at Calhoun's on the River. Guest Speaker: Charlie Parker with UT Construction Science Program
- 27** **11th Annual CSI Golf Tournament** - Monday, October 27th, 2014 at Willow Creek Golf Club. Lunch at 11:30 am and tee time at 12:30 pm.

NOVEMBER 2014

- 04** **CSI Board Meeting** - Tuesday, November 4th, 2014 at 11:30 am at Odle & Young's Office
- 11** **CSI Chapter Meeting** - Tuesday, October 11th, 2014 at 5:30 pm at Calhoun's on the River. Guest Speaker: S&ME to present Maryville project.

THE PRESIDENT'S MESSAGE

WHAT I LEARNED FROM CSI

MR GARY T. BERGERON, CSI
 Kelso-Regen Associates, Inc.
 CSI Knoxville Chapter President
gary@kelso-regen.com



The call that no mechanical engineer wants to hear came in at 4:45 on a Friday afternoon just before a long three day weekend. "We're hot and the peak summer season has yet to arrive" said the building owner. "The thermostats are set at 72 degrees and the HVAC units were barely keeping up at 77 degrees. Did you design the system with enough air conditioning capacity?" asked the owner.



As a mechanical engineer, I have learned something new at each CSI meeting. The importance of the correct installation of an air barrier is one of them. This was a building that I passed many times on my weekend trips to the local home improvement store during its construction. I had noticed the air barrier was "flapping in the wind" and called my fellow CSI members Darson Buckner and Suzan Jordan who are the local Tyvek product representatives. Darson & Suzan went to the jobsite on two separate occasions to instruct the contractor on the correct way to install and secure the air barrier along with the flashing and other components.

As the building construction continued, I stopped to review the construction progress on several other occasions. I noticed that the wall batt insulation had some gaps around the receptacles and was not continuous. It was in another discussion with other CSI members that I learned about the various grades of insulation installation. On another site visit, the contractor was installing insulation batts at the bottom chord of the roof trusses with staples. There were several locations where the kraft paper had pulled loose from the trusses. When I reviewed the drawings on the jobsite, I realized that the batts were the "air barrier"

between the attic and the space below. There was an acoustical ceiling system, but there were gaps in the insulation where the insulation ends met each other and where the HVAC ducts passed from the attic to the occupied space. After a discussion with the architect and contractor, it was decided to install nylon straps at the bottom chord of the trusses to help the insulation remain in place. It was with this building construction history in mind that I went to the building expecting the worst.

While the HVAC technician went to his truck to get his tools, I went into the attic to see the insulation. The entrance into the attic was through a removed ceiling tile and pushing the attic bottom chord insulation out of position. If this wasn't bad enough, I figured if there were significant gaps in the insulation, I might see some light leaking into the dark attic. There was no light leaking into the attic from below except where I entered, but there was a slight daylight glow from approximately half of the length of the ridge vent. When I turned on my flashlight, I observed that the roofing felt had been removed from only half of the underside of the shingled ridge vent. The roof sheathing had been cut back approximately 2" from both sides of the peak, but the felt had not been removed from the entire peak. The shingle roof was installed during the winter months and the contractor had attempted to keep the building "warm & dry" with felt while installing the shingles. The attic was not being ventilated as designed since the ridge vent was partially obstructed. The attic heat was penetrating the insulation and the ceiling tiles.



These items were resolved with the help of Darson, Suzan and other CSI members who provided their professional advice. This is the one of best benefits of CSI. The personal relationships that are formed and friends that you can call for advice are invaluable. I encourage everyone to come to the meetings and enjoy the fellowship.





CSI Knoxville

Construction Information...Simplified.

ELEVENTH ANNUAL CSI GOLF TOURNAMENT at Willow Creek Golf Club



Date: October 27, 2014
Tee Time: 12:30 pm
Lunch: Served at 11:30 am
Place: Willow Creek Golf Club

Cost:
 \$110.00 Individuals
 \$440.00 4 Man Teams

Game:
 4 person Scramble

Scoring:
 The golf pro will flight all scores into two divisions.

Contests:
 Longest Drive
 Closest to the Hole
 1st Place 1,2 Flights
 2nd Place 1,2 Flights

Event Coordinators:

Wes Crow, CSI
wecrow@meritconstruction.com
 Phone: (865) 389-3146

Josh Brock, CSI
Joshua.brock@generalshale.com
 Phone: 865-531-6203



The Knoxville Chapter of The Construction Specification Institute is committed to promoting education in construction related fields. Proceeds from this even benefit the University of Tennessee, College of Architecture and Design, the CSI Scholarship and other local construction and design educational programs.

ENTRY FORM:

Team/Company Name: _____
 Address: _____
 City, State, Zip _____
 Phone Number _____
 E-mail: _____
 Team Captains: _____ Teams _____ x \$440 = _____
 Players: _____ Players _____ x \$110 = _____

*Please make check or money order payable to CSI:
 Mail payment & entry form back to:
 CSI Golf Tournament c/o Wes Crow
 Merit Construction, Inc.
 10435 Dutchtown, Rd
 Knoxville, TN 37932

Entry deadline: October 20, 2014

EVENT SPONSOR FORM:

LUNCH OR CART SPONSOR: \$400.00 SIGN AT THE REGISTRATION TABLE & SIGN ON DRINK CART
 TEE / HOLE SPONSOR: \$150.00 SIGN AT TEE BOX
 LONG DRIVE SPONSOR: \$200.00 SIGN AT THE TEE BOX (2 AVAILABLE)
 CLOSEST TO THE HOLE SPONSOR: \$200 SIGN AT THE TEE BOX (4 AVAILABLE-PAR 3'S)

Company Name: _____
 Address: _____
 Phone Number: _____
 E-mail: _____

Cart: Contest Tee/Hole Long Drive Closest to Hole

*Please make check or money order payable to CSI: Mail payment & entry form back to: CSI Golf Tournament c/o Wes Crow
 Merit Construction, Inc.
 10435 Dutchtown, Rd
 Knoxville, TN 37932

Entry Deadline: October 20, 2014

Note: Willow Creek requires all golfers to wear soft spikes on the course. Dress is casual. Shorts are acceptable, jeans are not allowed. Collared shirts are recommended. You do not have to field an entire team to play. Individuals may sign up and they will be teamed with others for a good mix of talent.

CSI PRESENTATION SUMMARY

TVA ECONOMIC DEVELOPMENT

**Presented by:**

Andrew (Andy) Lawson is a regional consultant with TVA Economic Development, serving in the northeast Tennessee. He will present a high-level overview of TVA Economic Development that will include: who we are, what we do, power related incentive opportunities for new and existing companies, community development, technical services support with industrial properties (aerial maps, conceptual renderings of industrial facilities, etc.), along with an outline of past/present recruitment and business retention success stories.



Andy works with local power companies, community leaders, and state and regional economic development partners to help attract and retain quality jobs and investments. His responsibilities with TVA Economic Development include assisting prospective and existing businesses and industries, facilitating financial assistance and helping communities support and grow local businesses. He also works with TVA partners to implement community preparedness and retail

development programs, deliver financial resources and technical assistance, and coordinate TVA's marketing and business development efforts.

For the eighth straight year, TVA has been named one of Site Selection Magazine's [Top 10 North American Utilities](#) for economic development. In the 2014 Best & Worst States for Business, annual survey of over 500 CEOs across the U.S. concerning their views of the best and worst states for business, Tennessee was graded in third place for "Best". Only Florida and Texas were ranked higher.

The work of Economic Development is a critical component of TVA's reason for being. TVA works to achieve this mission by serving as a catalyst for sustainable economic development in the TVA region. We carry out this mission through a focus on four key tasks:

[Recruiting major industrial operations](#) to locate in the TVA region.

[Encouraging the location and expansion of companies](#) that provide good jobs for our citizens.

[Helping communities develop](#) the assets that make them attractive to companies seeking a new location.

[Offering support to entrepreneurs, women and minorities](#) working to start new businesses.

By working closely with states, communities, distributors and directly served customers, TVA Economic

Development strives to improve the lives of those living and working in the Tennessee Valley region.

CSI CORNER

MORE SPECIFICATIONS HISTORY

By Sheldon Wolfe, RA, FCSI, CCS, CCA
Greater Minneapolis-St. Paul Area



In the last post, “Where have I heard that before?” (<http://bit.ly/1maQmDs>)

I used several excerpts from a 1920 edition of the American Architect magazine. The comments showed a general concern about the importance of specifications, and about the absence of specifications in architectural education, stating “the preparation of specifications receives less study and attention in proportion to its importance than any other phase of architectural or engineering practice.”

While investigating the history of specifications, I was surprised to find references like this, as I had learned next to nothing about specifications in school (I think the word was spoken the first day of Professional Practice

of specifications. Primarily produced by manufacturers, they are more like a Sweets catalogue than guide specifications as we know them today - this despite the claim that “material that rightly belongs in a catalogue or that could be construed as advertising, has been excluded from the Manual.”

“In an endeavor to assist the person unaccustomed to writing specifications in a methodical manner and in the hope that those more hardened to the exigencies of the work might find some additional profit in the Manual, the following articles, which have been published in previous editions are again presented: THE SPECIFICATION WRITER; THE CONSTRUCTION OF A SPECIFICATION; and RULES FOR CHECKING DRAWINGS.”

“The specification writer must be known, in his office, as a compendium of information relating to all productive, executive, and constructive processes of the organization.”

“It is unfortunate that in architectural curricula so little attention is devoted to the earnest consideration of specifications as one of the essential fundamentals of correct construction.”

“After several years spent in the drafting room the specification writer will find that supervision of construction work will open his eyes to many things he did not understand clearly or was not familiar with when working on drawings. A good training can be gained in two or three years of construction supervision, after which the specification writer should return to the office organization and enter the executive work of the office.”

“Bear in mind always that if the specification is written so that the activities described therein are in sequence as they occur in the actual construction work, the dearness of the specification will not fail to be evident, for then the building will actually grow in the mind of the reader and the contractor will do his work in a satisfactory manner.”

“In the writing of specifications, the language used should be clear, accurate and exact.”

“Don’t confuse damp-proofing with waterproofing.” The book included AIA’s “Filing System for Architects’ Offices”, and “Standard Documents of the American Institute of Architects”, which contained the fourth edition of the AIA general conditions.

For organizing information, it offered “The Specification Checking List”, with forty-eight “Sections” for filing, plus an “Index to Major Divisions” with forty Divisions for specifications.

Forty-eight Sections and forty Divisions; isn’t that interesting? The Checking List had eight Sections for

Schedule of Sections

I.	MATTERS OF CONTRACTUAL RELATIONSHIP	XXIII.	CLAY TILE ROOFING
II.	INSPECTION AND TESTING OF MATERIALS	XXIV.	SLATE ROOFING
III.	WRECKING	XXV.	ROUGH CARPENTRY WORK
IV.	EXCAVATIONS	XXVI.	FURRING AND LATHING
V.	FOUNDATIONS	XXVII.	PLAIN PLASTERING
VI.	WATERPROOFING	XXVIII.	ORNAMENTAL PLASTERING
VII.	CONCRETE WORK	XXIX.	INTERIOR WOOD TRIM AND FINISH
VIII.	STRUCTURAL STEEL	XXX.	INTERIOR MARBLE WORK
IX.	REINFORCING STEEL	XXXI.	TILE WORK
X.	BRICK MASONRY	XXXII.	COMPOSITION FLOORS
XI.	STONE MASONRY	XXXIII.	LINOLEUM FLOORS
XII.	ARCHITECTURAL TERRA COTTA	XXXIV.	CORK TILE FLOORS
XIII.	ORNAMENTAL IRON AND BRONZE	XXXV.	OTHER SPECIAL FLOOR COVERINGS
XIV.	MISCELLANEOUS IRON AND STEEL	XXXVI.	GLASS AND GLAZING WORK
XV.	HOLLOW METAL TRIM	XXXVII.	PAINTING
XVI.	KALAMEIN WORK	XXXVIII.	DECORATION
XVII.	STEEL WINDOWS	XXXIX.	ELECTRICAL WIRING AND EQUIPMENT
XVIII.	SHEET METAL WINDOWS	XL.	PLUMBING AND DRAINAGE
XIX.	FIRE RESISTING DOORS	XLI.	HEATING
XX.	FIRE ESCAPES	XLII.	VENTILATION
XXI.	SHEET METAL WORK	XLIII.	REFRIGERATION
XXII.	COMPOSITION ROOFING	XLIV.	VACUUM CLEANING
		XLV.	CLOCK SYSTEMS
		XLVI.	FIRE ALARM SYSTEMS
		XLVII.	ELEVATORS
		XLVIII.	FURNITURE

class, never to be mentioned again). It wasn’t until I became a specifier that I understood what specifications are, thanks to my local CSI chapter. However, as good as the education and certification classes were, my understanding was that CSI pretty much invented specifications.

Until the advent of CSI in 1948, it was AIA, the Illinois Society of Architects and similar organizations, the American Architect magazine, the American Specification Institute, and similar sources that discussed the preparation and use of specifications. In this post, we’ll look at the ninth edition of The American Architect Specification Manual, published in 1927, and the Specification Record of the American Specification Institute, Volume 4, published in 1931, with a few quotes from each.

The American Architect Specification Manual Most of the book’s 353 pages are used for a collection

(CONTINUED ON PAGE 8)

(CONTINUED FROM PAGE 7)

mechanical and electrical information, while the Index had five Divisions for specifications. How did they later get squeezed into Divisions 15 and 16?

The American Specification Institute

The American Specification Institute produced four volumes of the Specification Record. With about 500 pages, it included both the AIA and EJCDC general conditions, and a list of ASTM standards.

“The specification should be clear, concise and complete.”

“The drawings, in general, should show the quantity, extent and layout of the work, and ordinarily do not state the character, make or manufacturer of the material or equipment. It is therefore necessary that the specification describe in detail the character of the material or equipment, otherwise the cheapest material or equipment satisfying the description shown on the drawings may be furnished.”

“Clear, concise, complete, and well coordinated drawings and specifications should secure fair and intelligent proposals, should eliminate vexatious extras and should eliminate also the necessity for verbal or supplementary written instructions.”

“Eliminate all clauses that reflect indecision or lack of knowledge. Do not put anything in the specifications that will not be enforced to the letter.”

“Use simple words. Do not use big words. Use nouns. Do not use pronouns. Use short sentences. Do not write long and involved sentences. Make the language a clear and concise expression of just what is meant. Give directions, not suggestions. Tell the Contractor what shall or shall not be done.”

And then there is CSI

Does any of the above sound familiar? It’s clear that CSI’s founders didn’t start from scratch, and it’s likely at least some of them had references such as these in their offices. Even so, there seems to be a common thread of simple, practical reasoning in all of the specifying guides I’ve seen, and I suspect the rules did not originate in the construction industry. They are logical and reasonable, perhaps not for writing a novel, but for any type of technical writing used to convey information about a design concept to make it possible to build.

Even though CSI didn’t create these rules, it expanded and clarified them, bringing a consistent, coordinated way of writing and interpreting specifications, based on AIA and EJCDC documents.

© 2014, Sheldon Wolfe, RA, FCSI, CCS, CCCA, CSC

Agree? Disagree? Leave your comments at <http://swconstructivethoughts.blogspot.com/>.



KNOXVILLE CHAPTER: AUGUST 2014

2 PROFESSIONAL RETIRED

2 PROFESSIONAL EMERITUS

12 STUDENT

51 PROFESSIONAL

67 TOTAL



Mark your calendar!

The 3rd Annual East Tennessee Accessibility Symposium will be October 3, 2014 at the Knoxville Civic Coliseum.

We hope to see you there!

Green City, Clean Waters

9.3.14 Lecture

5:30 - 6:30
A+A 109

The City of Philadelphia leads the nation in green stormwater infrastructure and restoration through the strategic integration of regulatory compliance obligations with a broader commitment to sustainability and city revitalization. Philadelphia Parks & Recreation is a major partner with the Philadelphia Water Department, hosting many green infrastructure projects and undertaking public outreach and environmental education.

6:40 - 7:15
A+A Atrium

Reception - Hosted by UTK - ASLA Student Chapter

9.4.14 Extended Lecture

9:00 - 11:00
Hollingsworth Auditorium

Learn how our \$1.2 billion investment over the next 25 years deviates from conventional infrastructure approaches through the use of multifunctional land-based infrastructure systems which provide maximum returns to the public and the environment.

An in depth look at how the City of Philadelphia has accomplished its goals of sustainable infrastructure practices and their work to become leaders in green infrastructure and storm water management. This 2-hour workshop will present similar material to the evening lecture while allowing more time for interaction with Mr. Focht and extended Q&A.

Directions

A+A | UT Art and Architecture Building - 1715 Volunteer Blvd., Knoxville, TN 37996
Hollingsworth Auditorium | Ellington - 2431 Joe Johnson Dr., Knoxville, TN 37996

Mark A. Focht, PLA, FASLA
First Deputy Commissioner, Parks & Facilities
Philadelphia Parks & Recreation

President
American Society of Landscape Architects

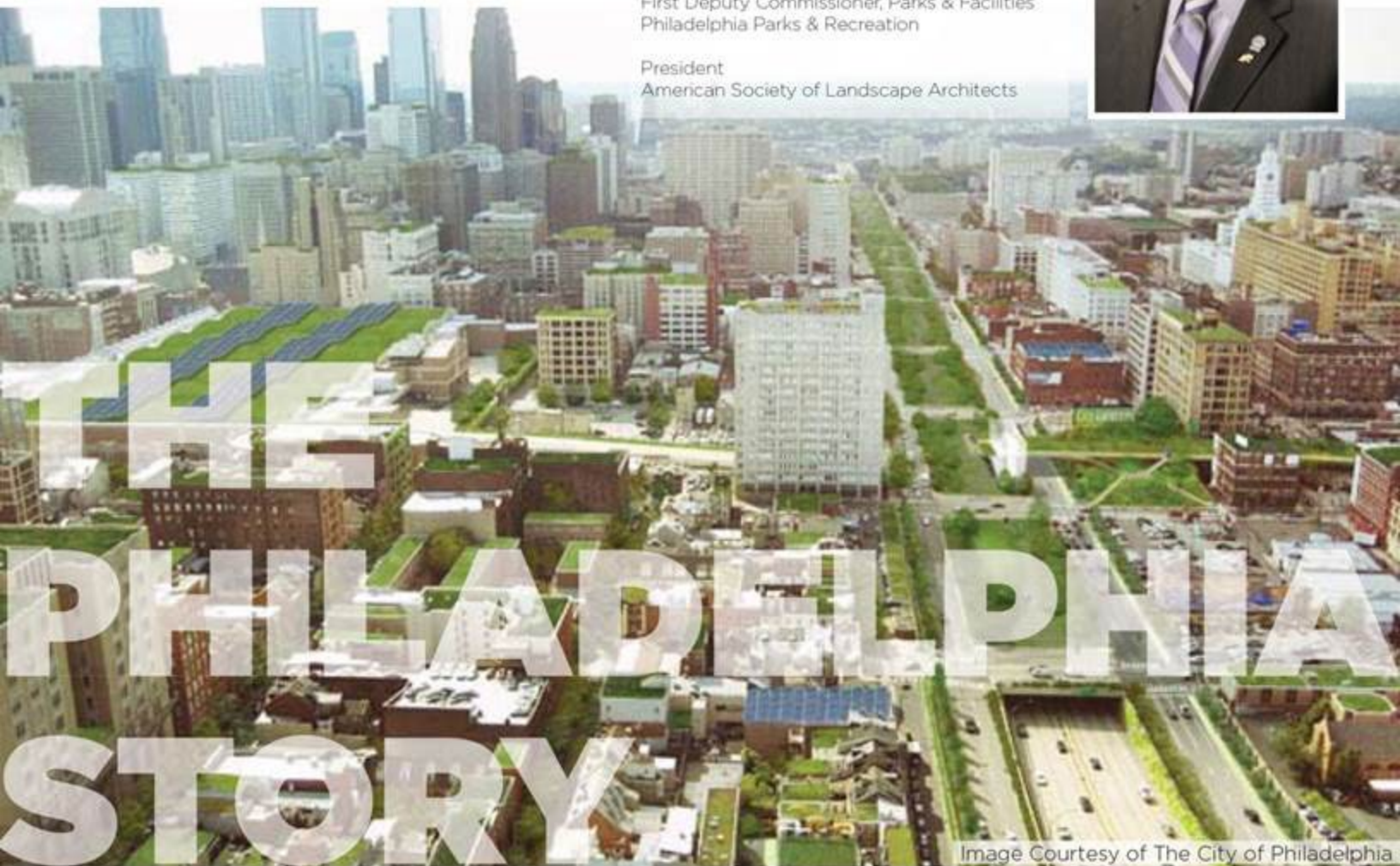


Image Courtesy of The City of Philadelphia

SPONSORED BY



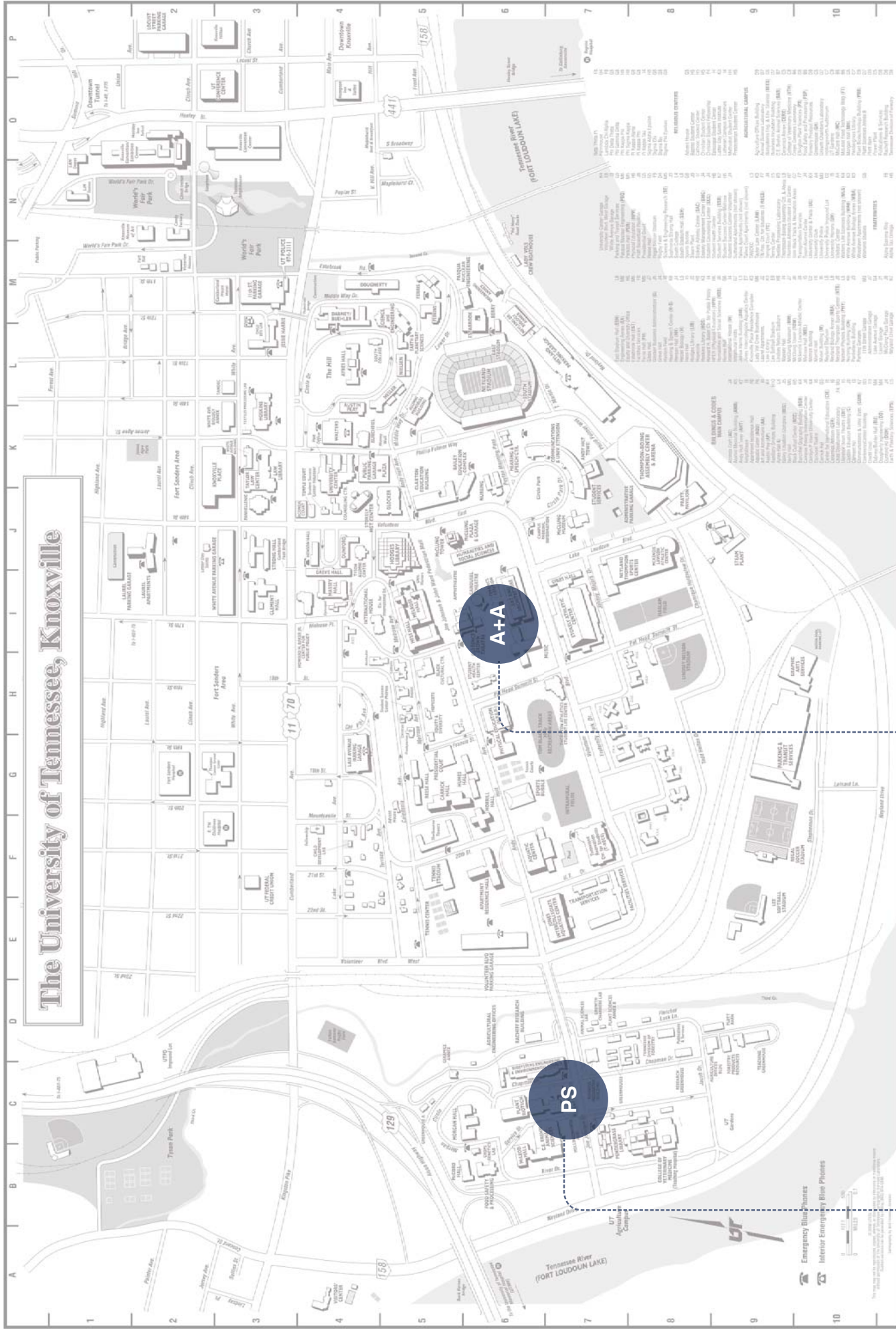
THE UNIVERSITY OF TENNESSEE, KNOXVILLE

LANDSCAPE ARCHITECTURE
program

AN ACCREDITED GRADUATE PROGRAM OFFERED BY THE COLLEGE OF ARCHITECTURE AND DESIGN AND THE COLLEGE OF AGRICULTURAL SCIENCES AND NATURAL RESOURCES

contact crodman@utk.edu for additional information

The University of Tennessee, Knoxville



Parking Passes will be available to off-campus visitors at the respective registration tables for each event. Please allow sufficient time to return to your vehicle and place your pass on your dash before the beginning of each event.

SEE NEXT PAGE FOR ENLARGED MAPS

A+A: UT Art and Architecture Building
 1715 Volunteer Blvd., Knoxville, TN 37996
 Wednesday, 5:30-6:30 - Room 109
 Wednesday, 6:40-7:15 - Atrium
 Off Campus Visitor Parking By Permit Only, Lot S23

PS: Ellington Plant Sciences Building
 2431 Joe Johnson Drive, Knoxville, TN 37996
 Thursday, 9:00-11:00 - Hollingsworth
 Auditorium Off Campus Visitor Parking By Permit Only, Lot S66

Emergency Blue Phones
 Interior Emergency Blue Phones

Scale: 1" = 100'
 North Arrow

Room No.	Room Name	Room No.	Room Name
101	Administrative Services	101	Administrative Services
102	Administrative Services	102	Administrative Services
103	Administrative Services	103	Administrative Services
104	Administrative Services	104	Administrative Services
105	Administrative Services	105	Administrative Services
106	Administrative Services	106	Administrative Services
107	Administrative Services	107	Administrative Services
108	Administrative Services	108	Administrative Services
109	Administrative Services	109	Administrative Services
110	Administrative Services	110	Administrative Services
111	Administrative Services	111	Administrative Services
112	Administrative Services	112	Administrative Services
113	Administrative Services	113	Administrative Services
114	Administrative Services	114	Administrative Services
115	Administrative Services	115	Administrative Services
116	Administrative Services	116	Administrative Services
117	Administrative Services	117	Administrative Services
118	Administrative Services	118	Administrative Services
119	Administrative Services	119	Administrative Services
120	Administrative Services	120	Administrative Services
121	Administrative Services	121	Administrative Services
122	Administrative Services	122	Administrative Services
123	Administrative Services	123	Administrative Services
124	Administrative Services	124	Administrative Services
125	Administrative Services	125	Administrative Services
126	Administrative Services	126	Administrative Services
127	Administrative Services	127	Administrative Services
128	Administrative Services	128	Administrative Services
129	Administrative Services	129	Administrative Services
130	Administrative Services	130	Administrative Services
131	Administrative Services	131	Administrative Services
132	Administrative Services	132	Administrative Services
133	Administrative Services	133	Administrative Services
134	Administrative Services	134	Administrative Services
135	Administrative Services	135	Administrative Services
136	Administrative Services	136	Administrative Services
137	Administrative Services	137	Administrative Services
138	Administrative Services	138	Administrative Services
139	Administrative Services	139	Administrative Services
140	Administrative Services	140	Administrative Services
141	Administrative Services	141	Administrative Services
142	Administrative Services	142	Administrative Services
143	Administrative Services	143	Administrative Services
144	Administrative Services	144	Administrative Services
145	Administrative Services	145	Administrative Services
146	Administrative Services	146	Administrative Services
147	Administrative Services	147	Administrative Services
148	Administrative Services	148	Administrative Services
149	Administrative Services	149	Administrative Services
150	Administrative Services	150	Administrative Services

KNOXVILLE BIM USER GROUP MEETING

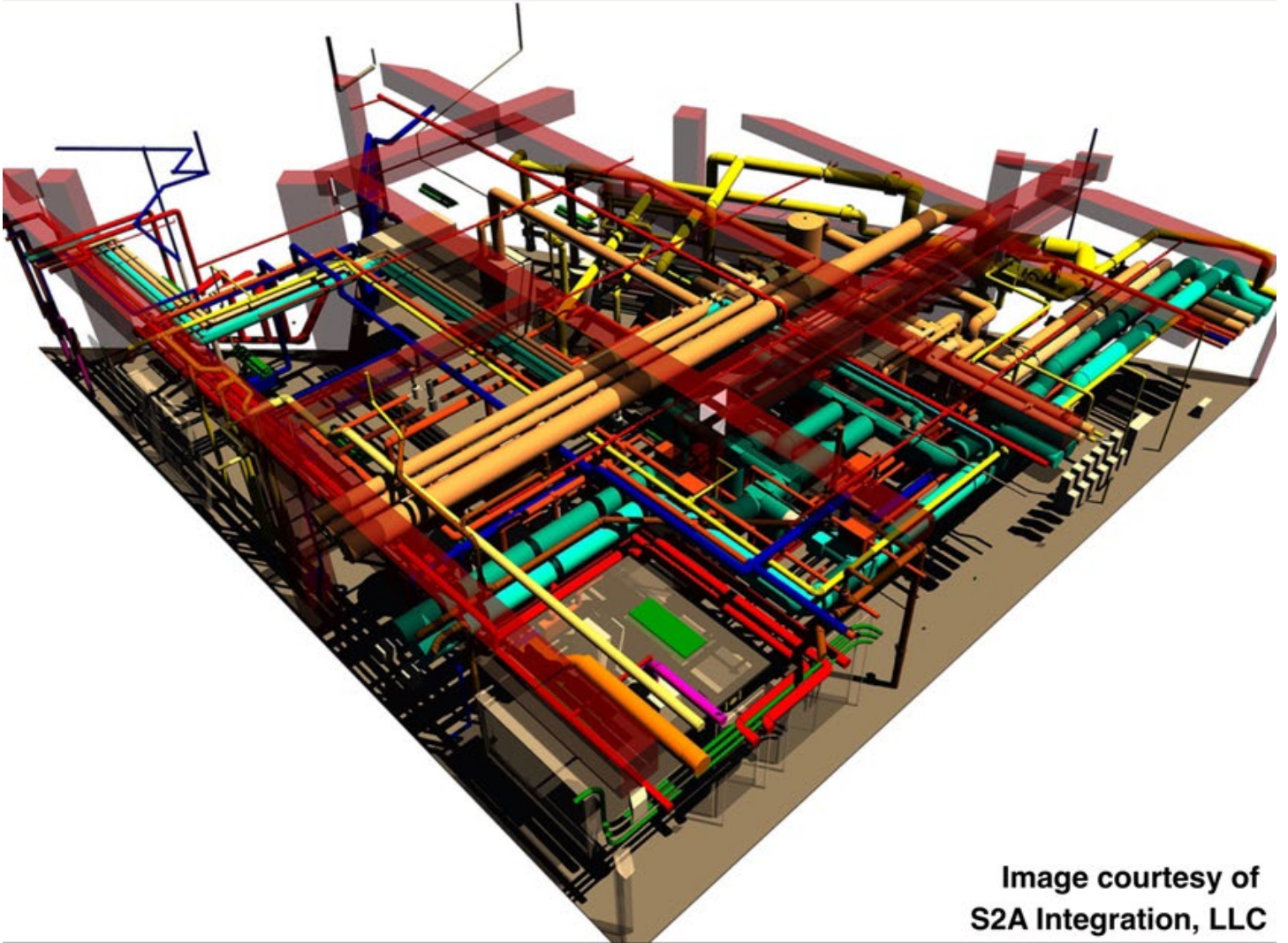


Image courtesy of
S2A Integration, LLC

2014
SEPTEMBER 04
6:00 - 7:30pm

ROUND TABLE WITH
DAVID DRAPER
Lewis Thomason

SPONSORED BY
S2A INTEGRATION
Sherry Ault

BIM : Legal Aspects

EAST TENNESSEE COMMUNITY DESIGN CENTER

1300 N Broadway St, Knoxville, TN 37917
RSVP @ Sherry@S2AIntegration.com - Limited Seating

COMMERCIAL WOOD WINDOW INSTALLATION SYSTEMS (1 CEU)

Presented by Shannon Annette Webb,
Pella Southeast Commercial Division

TUESDAY, SEPTEMBER 30TH, 2014

Lunch & Networking: 11:30 am – 12:00 pm
Presentation: 12:00 pm – 1:00 pm

Where:

**East Tennessee Community Design Center
(ETCDC) WATE 6 Carriage House
1300 N. Broadway, Knoxville, TN 37917**



RSVP:

Attendance is limited. If you wish to participate, please respond to Jeremy Shipp at shipp.arc@gmail.com with your name, email, and phone by Friday, September 26th, 2014.

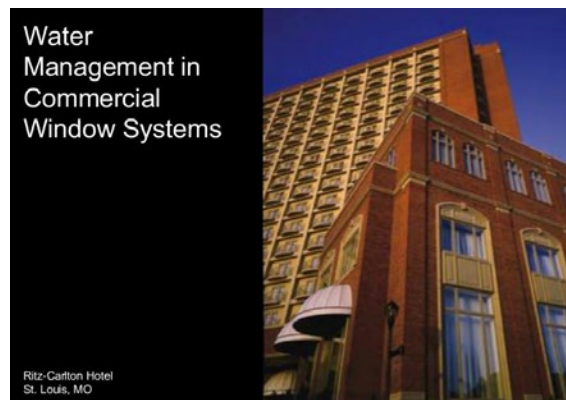


Learning Objectives:

- Discuss the ways water penetrates the building envelope.
- Explain the concepts of water leakage and describe safe practices for preventing water leakage in buildings.
- Describe how window systems can be detailed into various wall types to minimize water leakage at the interface between the window and the wall, thus contributing to occupant health and welfare.
- Evaluate various strategies for ensuring that the specified performance is achieved so indoor environments are livable, comfortable, and healthy.

Program Description:

Water leakage through the building envelope continues to be one of the major reasons for litigation involving architects. This course provides an introduction to water management in commercial window systems. The course begins with a review of the basic principles involved in preventing water leakage in wall systems. The course then explores the ways that these basic principles can and should be applied to windows as well. Water leakage prevention strategies for three distinct window applications – punched openings, ribbon windows and window walls – are explained, including a detailed case study of a large installation in an historic building. The course ends with a review of a series of strategies for ensuring that the performance specified for a commercial window system is actually achieved in the field.



Pella Corporation is registered with the American Institute of Architects' Continuing Education System (AIA/CES) and is committed to developing quality learning activities in accordance with AIA/CES criteria. This seminar meets the AIA/CES criteria for Health/Safety/Welfare (HSW). AIA Members will receive 1 Learning Unit (LU), which will be reported directly to the CES for them. Those who wish to receive credit will need to have their AIA membership numbers available at the time of the seminar. Designers, specifiers, and project architects will benefit most from the content of this seminar.

CSI MEETING MINUTES

BOARD BRIEFS - AUGUST 5, 2014

By Nancy Roberts, CSI, CDT

Edited by THE SPECK Editor, Stacy Colbaugh, CSI, CDT

In Attendance:

Gary Bergeron, President

Nancy Roberts, Secretary

Leslie Fawaz, Treasurer

Jim Odle, Director (2014-2015)

Donna Covert, Director (2014-2015)

Will Dunklin, Director (2014-2016)

Kathy Proctor, Director (2014-2016)

Suzan Jordan, Director (2014-2016)

Josh Brock, Product Show Chair

Jim Vineyard, Chapter Programs Chair

These meeting minutes were recorded and are presented as understood by the Secretary, Nancy Roberts, and are outlined as follows:

The meeting was held at Odle & Young's Office and was called to order at 5:30 p.m. by Gary Bergeron. Meeting generally followed a meeting agenda provided by Gary in advance of the meeting.

1. Previous Meeting Minutes

The July 1, 2014 meeting minutes had been prepared and distributed by Nancy Roberts

2. Treasurer's Report

Leslie Fawaz updated the officer listing in filing with secretary of state.

3. President Report

3.1 Gary thanked Suzan Jordan for hosting the July 5th party and thanked Darson and Susanne Buckner for serving as master grillers. The party was big success and fun for everyone.

3.2 Gary, Kathy Proctor, Will Dunklin, and Katie Lewis will be attending the Gulf States Region (GSR) leadership meeting to be held in Jackson/Pearl, MS on August 8-9.

3.3 Gary announced that the construction science fair will be held on October 1st from 10 a.m. until 3 p.m. at the Brehm Arena on the UT Agricultural Campus. Samer Shatara will need some assistance with other CSI members; Paul Pierson and Jim Odle have agreed to help.

4. Vice President Report

Lukas Salyer was out of town and unable to attend. He sent congratulations to the chapter for winning the Outstanding Chapter Commendation award. He relayed that he has initiated product show discussion with Josh Brock. He also relayed that the scavenger hunt date will be set once Geoffrey Cavalier talks with Marlene Davis.

5. President Elect Report

– Position Currently Vacant

6. Board members/committee group reports

Education – Will Dunklin, Director: Jeremy Shipp will work with BIM Group for 'lunch and learn' meetings. It was reported that the first BIM Group meeting had 8 attendees. Next meeting was held at Shoffner Kalthoff office; meeting is by invite only due to space limitations. The plans are to rotate meetings among different offices.

Gary will help Jeremy access the AIA/CES website in order to provide CEU certificates for educational sessions.

Jim Vineyard reported that National Gypsum Rep. will speak at August meeting. The September speaker will be TVA economic development representative to discuss 'Megasite' selection. The October speaker will be Charlie Parker with UT construction science program. The November speaker will be from S&ME to present Maryville project. No speaker planned for December.

Gary discussed the special programs such as ARE 5.0 review in Chattanooga, USGBC plumbing presentation, and Accessibility Symposium.

6.3 Recognition (technical, certification, and awards)

– Donna Covert, Director: Donna reported that BIM Group has started with discussions about how best to communicate with one another. There are pros and cons for using either LinkedIn vs. Facebook.

6.4 Communications (website, publication, and liaison)

– Daniel Smith, Director: Still waiting for improvements from Institute website. Josh has started a CSI Knoxville LinkedIn page and will write an article for the Speck to promote the group.

7. Calendar

No changes to calendar.

8. Old Business

No old business.

9. New Business

The subject of a recruitment meeting for new members was broached. Gary will develop options and report back to the board. The Board Meeting was adjourned at approximately 6:15 p.m. **Next Board Meeting will be Tuesday, September 2nd, 2014.**





Not every cloud has a silver lining.
That's why there's Tyvek®.

Darson Buckner, CSI, CDT
LEED Green Associate
Dealers Warehouse Corporation
DuPont Tyvek Senior Certified
Weatherization Specialist
865-556-3140
darsonbuckner@hotmail.com

The forecast calls for Tyvek®

DuPont™ Tyvek® CommercialWrap® is the weather-resistant barrier that's specifically engineered to help protect exterior wall systems in today's commercial construction.

Tyvek® helps keep wind and water outside your building. It's many times more effective at bulk water holdout than conventional building papers. And because Tyvek® breathes, it helps allow water vapor molecules to exit the wall cavity. So walls stay dryer.

Intelligent moisture management is critical to building performance. That's why more architects specify Tyvek® CommercialWrap®—for whatever nature has in store. Find out more at **1-800-44-TYVEK** or **www.TYVEK.com**.

Copyright © 2003 E.I. du Pont de Nemours and Company. Tyvek® is a registered trademark of DuPont for its brand of protective material. All rights reserved.

**Tougher, stronger,
higher-performance**

DuPont™
Tyvek®
COMMERCIALWRAP®

DU PONT

The miracles of science™





East Tennessee's Third Annual Accessibility Symposium

PRESENTED BY



The East Tennessee Accessibility Symposium will showcase how to create access for people with disabilities and seniors. This interactive show will demonstrate how to design for accessibility, how beneficial it is, and how easy and affordable it can be to provide when considered during the design phase. You'll hear straight from the experts in the design industry and from people who benefit from accessibility. This event will showcase state of the art solutions and provide opportunities to better understand what *true access* means and why doing it right the first time matters....

Mr. Bill Hecker of Hecker Design, LLC is an architect based in Birmingham, Alabama who has 22 years of experience in the field of accessible design and creative solutions used to achieve it. Mr. Hecker is the architect frequently consulted by the United States Department of Justice and will be leading the CEU session titled, **"Read It, Understand It, Now Implement It--where the IBC (International Building Code) meets the ADA (Americans with Disabilities Act)."** Participants of this session will leave with a clear understanding of the difference between the IBC and the ADA and how best they can adhere to both so that they've satisfied not only the adopted building code but also the requirements of federal civil rights law. You will not want to miss it!!

Members of the Knoxville Bar Association will be leading the session titled, **"People's Rights, Owner's Responsibilities, Designer's Requirements"** which will provide information about the "legal" side of access—what people with disabilities need and look for and the building owner's responsibility for providing it. Participants will leave with a better understanding of whose responsibility it is to provide accessibility, what happens when a business isn't accessible and the possible outcome of a formal complaint or lawsuit. This is a session that property owners and managers will want to be a part of!!

WHEN: Friday, October 03, 2014 from 9:00 am to 4:00 pm

WHERE: Knoxville Civic Coliseum 500 Howard Baker Jr. Ave., 37915

COST: Exhibit Floor & Experiential Areas - FREE

LUNCH: \$5.00 CEU SEMINARS: \$25 each

**Early Bird Registration Rate EXTENDED until September 5th!!
Registration Deadline EXTENDED until September 15th!**

**PRODUCT SHOW, EXPERIENTIAL AREAS, PRESENTATIONS,
AND HSW CEU SEMINARS**

For more information and to register, visit <http://www.cityofknoxville.org/accessibilitysymposium/>

The East Tennessee Accessibility Symposium Friday October 3, 2014

Sponsor Information

“The East Tennessee Accessibility Symposium is an interactive show that will demonstrate how to design for accessibility, how beneficial access is, and how easy and affordable it can be to provide when considered during the design phase of any project. You’ll hear straight from the experts in the design industry and from people who benefit from accessibility. This event will showcase state of the art solutions for creating access for people with disabilities and seniors and provide opportunities to better understand what true access means.”

Exhibitor/Vendor - \$250 (Level 1 advertising)

Exhibitors or Vendors are agencies or companies that would like to be part of the vendor showcase. The majority of exhibits provide information or product demonstration that is relative to disability, aging, or increasing the accessibility of our built environment—including public spaces as well as personal homes. Exhibitors and vendors are welcome to provide any type of free item or literature, or hold a drawing for a prize. An 8’x 8’ space will be assigned for your display. (If a larger or atypical space is needed for product display, please contact us to discuss.) All presentation equipment and supplies must be provided by the exhibitor/vendor. There will be one 6’ table provided along with two folding chairs, and limited electrical outlets are available if requested in advance. Exhibitors/Vendors registered by **September 5, 2014** will be listed in the Symposium program.

Premium Sponsor - \$500 (Level 2 advertising)

Premium Sponsors receive the same exhibit space as Exhibitors/Vendors in addition to having the company name and logo listed in the Symposium program. Premium Sponsors registered by **August 15, 2014** will be listed in Symposium correspondence, including media releases.

Food/Hospitality Sponsor - \$750 (Level 3 advertising)

Food/Hospitality Sponsors (one for breakfast and one for lunch,) receive the same benefits as Premium Sponsors in addition to having their company logo displayed on the cups and napkins.

CEU Sponsors - \$1000 (Level 4 advertising)

CEU Sponsors receive the same benefits as Premium Sponsors in addition to being able to distribute promotional materials for their company/products during the CEU seminars. CEU Sponsors registered by **August 15, 2014** will be listed in Symposium correspondence, including media releases, and their company name and logo will be displayed on the website and Facebook page.

Presenting Sponsor - \$2500 (Level 5 advertising)

Presenting Sponsors receive the same benefits as CEU Sponsors. Presenting Sponsor’s name and logo will be included in Symposium correspondence, including media releases, and the company name, logo, description and brief sponsor’s message will be included in the program. Presenting Sponsors will receive special recognition before each continuing education course and throughout the event. Presenting Sponsor’s company name and logo will be displayed on the website and Facebook page.

The Accessibility Symposium of East Tennessee Friday October 3, 2014

Sponsor Registration Form

Early Registration Deadline for inclusion in all event correspondence is 08/15/2014

Final Registration Deadline - 09/05/2014

Company Name _____

Contact Name _____

Contact Phone Number _____

Email Address _____

Sponsorship Level:

____ Non-Profit Exhibitor – Free – Tax Exemption # _____

____ Exhibitor \$250

____ Premium Sponsor \$500

____ Hospitality Sponsor \$750 (Please select one) Breakfast Lunch

____ CEU Sponsor – \$1000 per program

Select which program you would like to sponsor:

____ Keynote ____ Seminar 1 ____ Seminar 2

____ Presenting Sponsor \$2500

Do you have any exhibit or exhibitor special requirements? (Electrical, internet access, tables, etc.) If yes, specify here _____

All exhibitors please note: Exhibit set-up will take place on Friday between 7:00 and 8:30 a.m. and tear-down will be between 4:00 p.m. and 5:30 p.m. on the day of the show. If you will need additional set-up time, please contact Stephanie Cook at scook@cityofknoxville.org or 865-215-2034 to discuss.

Please register on our website at <http://www.cityofknoxville.org/accessibilitysymposium/>

Payment Options: Check Invoice (to be sent to Registrant unless otherwise specified)

All payments are due by September 12, 2014

Make checks out to: City of Knoxville and mail to City of Knoxville Disability Services Office, (Attention: Accessibility Symposium 2014) 400 Main Street, Suite 524 Knoxville, TN 37902

By sponsoring this event, you affirm that your donation complies with Chapter 2, Article VIII, Section 11 of the Knoxville Code relating to Ethics in Public Contracting, and you assert that your donation is not intended to influence the City's selection of vendors for any future contract.

THANK YOU FOR YOUR SPONSORSHIP!

FY 2015 GSR Officers and Committee Chairs

PRESIDENT

William Sundquist, CSI
Tel: 423-509-3627
Email: wsundquist2ortweinsign.com

VICE PRESIDENT

James Bagley, CSI, CCS, AIA
Tel: 334-271-3200
Email: james.bagley@gmcnetwork.com

SECRETARY (2nd Yr.)

Cindi Brooks, CSI, CDT
Tel: 423-305-2554
Email: cindibrooksgsr@gmail.com

TREASURER (1st Yr.)

Amy Fleming, CSI, CDT
Tel: 423-267-2288
Email: afleming@triadelectriccorp.com

IMMEDIATE PAST PRESIDENT

Billy Mathis, CSI, CDT
Tel: 501-758-7443
Email: bjmathis@taggarch.com

COMMITTEE CHAIRS

ACADEMIC AFFAIRS (1st Yr.)

Kent Kile, CSI, CCPR
Tel: 615-347-4572
Email: kkile@ppg.com

AWARDS (3rd Yr.)

Lantz Kuykendall, CSI, CDT
Tel: 601-981-4677
Email: elkarch5@gmail.com

CERTIFICATION (1st Yr.)

Christopher Young, CSI, CCS
Tel: 504-524-4634
Email: cjoy@blitchknevel.com

EDUCATION (1st Yr.)

Michael Sanders, CSI, CCS, CCCA
Tel: 501-514-2791
Email: S2KMichael@conwaycorp.net

ELECTRONIC COMMUNICATIONS

(1st Yr.)

John Murray, CSI, CDT
Tel: 601-948-7337
Email: jmurray@ccdarchitects.com

FINANCE (1st Yr.)

Randall Lewis, CSI, AIA
Tel: 601-948-4601
Email: rlewis@jhharchitects.com

FUND RAISING/PRODUCT SHOWS (1st Yr.)

Floyd Sterling, CSI, CDT
Tel: 318-226-0056
Email: fsterling@shreveland.com

MEMBERSHIP (1st Yr.)

Mike Davis, FCSI, CDT
Tel: 423-421-4103
Email: mmd1300@epbfi.com

OPERATING GUIDE (2nd Yr.)

Cindi Brooks, CSI, CDT
Tel: 423-305-2554
Email: cindibrooksgsr@gmail.com

PLANNING (1st Yr.)

Bruce Martin, CSI, CDT, RRC
Tel: 423-775-1793
Email: bmartin@dillardconstruction.com

PUBLICATIONS (1st Yr.)

John Dunaway, CSI, CCS, AIA
Tel: 601-948-7337
Email: john@ccdarchitects.com

TECHNICAL (1st Yr.)

Gary Bergeron, CSI, CCS
Tel: 865-588-5348
Email: gary@kelso-regen.com

SPECIFICATION COMPETITION (1st Yr.)

Robert B. Swan, CSI, CCS, CCCA, AIA
Tel: 504-586-9303
Email: rgswan1@earthlink.com

NOMINATING (1st Yr.)

James Bagley, CSI, CCS, AIA
Tel: 334-271-3200
Email: james.bagley@gmcnetwork.com

GULF STATES REGION INSTITUTE DIRECTOR

JIMMY LAIL, CSI

Tel: 423-265-0467
Email: jimmy@rainesbrothersinc.com



KNOXVILLE CHAPTER CSI LEADERS – 2014-2015



OFFICERS

President	Gary Bergeron	gary@kelso-regen.com	865-748-6304
President-elect	Lukas Salyer	lukas.salyer@generalshale.com	865-388-1833
Secretary	Nancy Roberts	nrober10@utk.edu	865-599-1632
Treasurer	Leslie Fawaz	leslie@communitydc.org	865-748-7705
Past President	Samer Shatara	sshatara@denark.com	865-388-3611

DIRECTORS

2014 - 2015	Jim Odle	j.odle.oyarch@comcast.net	865-803-4237
	Donna Covert	covertarch@gmail.com	865-310-9276
	Daniel Smith	daniel.smith@odomconstruction.com	865-389-6691
2014 - 2016	Will Dunklin	will@williamdunklin.com	865-525-6322
	Kathy Proctor	ksp53@me.com	865-599-7783
	Suzan Jordan	suzanwjordan@icloud.com	865-389-9476

COMMITTEES

Members Services			
Membership	Darson Buckner	darsonbuckner@hotmail.com	865-556-3140
Fun/ House	Donna Covert	donna.covert@gmail.com	865-310-9276
	Suzan Jordan	suzanwjordan@icloud.com	865-389-9476
Education			
Education	Jeremy Shipp	shipp.arc@gmail.com	423.506.0058
Chapter Programs	Jim Vineyard	jbvineyard@tva.gov	423-240-2481
Accessibility	Gary Bergeron	gary@kelso-regen.com	865-748-6304
Student Chapter			
Pres.	Geoffrey Cavalier	gcavali@vols.utk.edu	615-964-1260
Vice Pres.			
Secretary			
Treasurer			
Recognition			
Technical	Will Dunklin	will@williamdunklin.com	865-525-6632
	Jim Odle	j.odle.oyarch@comcast.net	865-803-4237
Certification	Paul Pierson	paulpierson@comcast.net	865-560-0272
Awards	Daniel Smith	daniel.smith@odomconstruction.com	865-389-6691
Communication			
Website	Suzan Jordan	suzanwjordan@icloud.com	865-389-9476
Publication	Stacy Flick Colbaugh	scolbaugh@lewisgroup.net	865-584-5000
Faculty Advisor	James Rose	rose18@utk.edu	865-719-0743
Academic Affairs			
Fundraising			
Product Show	Josh Brock	Joshua.brock@generalshale.com	865-531-6203
Golf Tournament	Wes Crow	wcrow@meritconstruction.com	865-966-4100
	Josh Brock	Joshua.brock@generalshale.com	865-531-6203
Chapter Administration			
Planning & Historian	Kathy Proctor	ksp53@me.com	865-599-7783
Bylaws & Operating Guide	Nancy Roberts	nrober10@utk.edu	865-599-1632